



## USW-24-POE Quick Start Guide

### Package Contents



UniFi Switch



Rack-Mount Brackets (Qty. 2)



Bracket Screws (Qty. 8)



Mounting Screws (Qty. 4)



Cage Nuts (Qty. 4)



Power Cord

### System Requirements

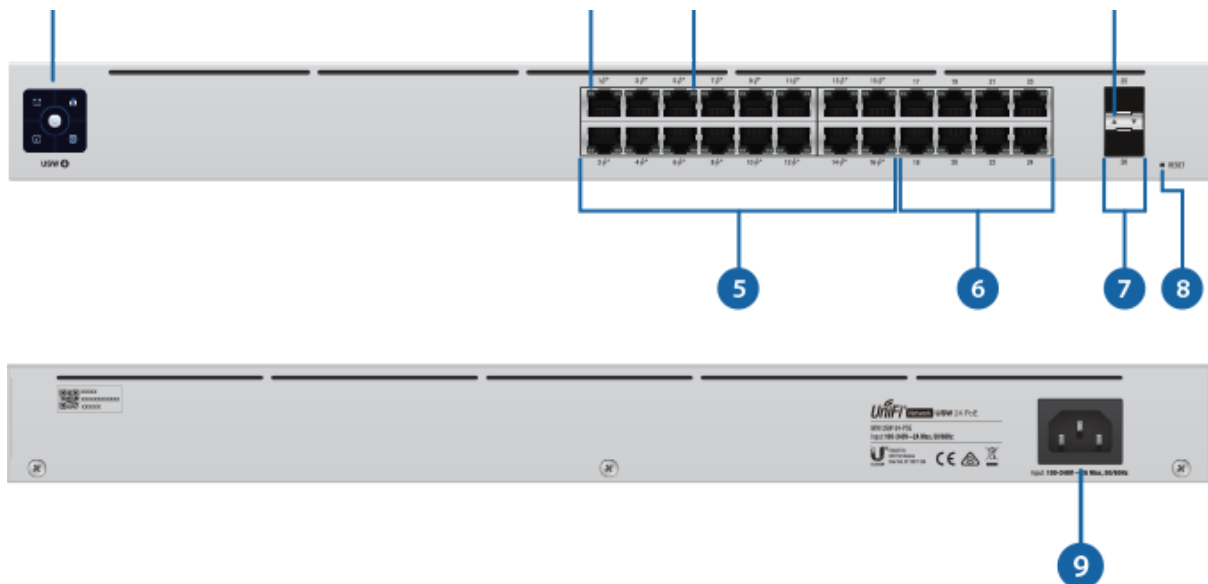
- Linux, Mac OS X, or Microsoft Windows 7/8/10
- Java Runtime Environment 1.6 (1.8 or newer recommended)
- Web Browser: Google Chrome (Other browsers may have limited functionality.)
- UniFi Controller software v5.11.x (or newer), available at: [ui.com/download/unifi](https://ui.com/download/unifi)



**IMPORTANT:** We strongly recommend using UPS backup and power regulation to prevent equipment damage due to stability issues with local AC power.

### Hardware Overview

## USW-24-POE Quick Start Guide



### 1 Touchscreen Display

Bootup Animation	Initializing.
Steady White	Factory defaults, waiting for adoption.
Steady Blue	Successfully adopted by a network and working properly.
Location Animation	This indicates that you clicked Locate in the UniFi Controller software. The software will also display the location of the device on the map.

### 2 RJ45 PoE LED (Ports 1 - 16)

Off	No PoE
Amber	802.3af/at PoE

### 3 RJ45 Speed/Link/Activity LED (Ports 1 - 24)

Off	No Link
Amber	Link Established at 10/100 Mbps Flashing Indicates Activity
Green	Link Established at 1000 Mbps Flashing Indicates Activity

### 4 SFP Speed/Link/Activity LED (Ports 25 - 26)

--	--



## USW-24-POE Quick Start Guide

Green	Link Established at 1 Gbps Flashing Indicates Activity
<b>5</b> RJ45 (Ports 1 - 16)	
RJ45 ports support 10/100/1000 Ethernet connections and 802.3af/at PoE output.	
<b>6</b> RJ45 (Ports 17 - 24)	
RJ45 ports support 10/100/1000 Ethernet connections.	
<b>7</b> SFP (Ports 25 - 26)	
Hot-swappable SFP ports support 1 Gbps connections.	
<b>8</b> Reset Button	
<p>This button serves two functions for the UniFi Switch:</p> <ul style="list-style-type: none"> <li>• <b>Restart</b> Press and release the Reset button quickly.</li> <li>• <b>Restore to Factory Default Settings</b> Press and hold the Reset button for more than five seconds.</li> </ul>	
<b>9</b> Power Port	
Connect the included Power Cord to the Power port.	

## Installation Requirements

- Phillips screwdriver
- Standard-sized, 19" wide rack with a minimum of 1U height available
- For indoor applications, use Category 5 (or above) UTP cabling approved for indoor use.
- For outdoor applications, shielded Category 5 (or above) cabling should be used for all wired Ethernet connections and should be grounded through the AC ground of the power supply.

We recommend that you protect your networks from harmful outdoor environments and destructive ESD events with industrial-grade, shielded Ethernet cable from Ubiquiti. For more details, visit: [ui.com/toughcable](https://ui.com/toughcable)



**Note:** Although the cabling can be located outdoors, the UniFi Switch itself should be housed inside a protective enclosure.

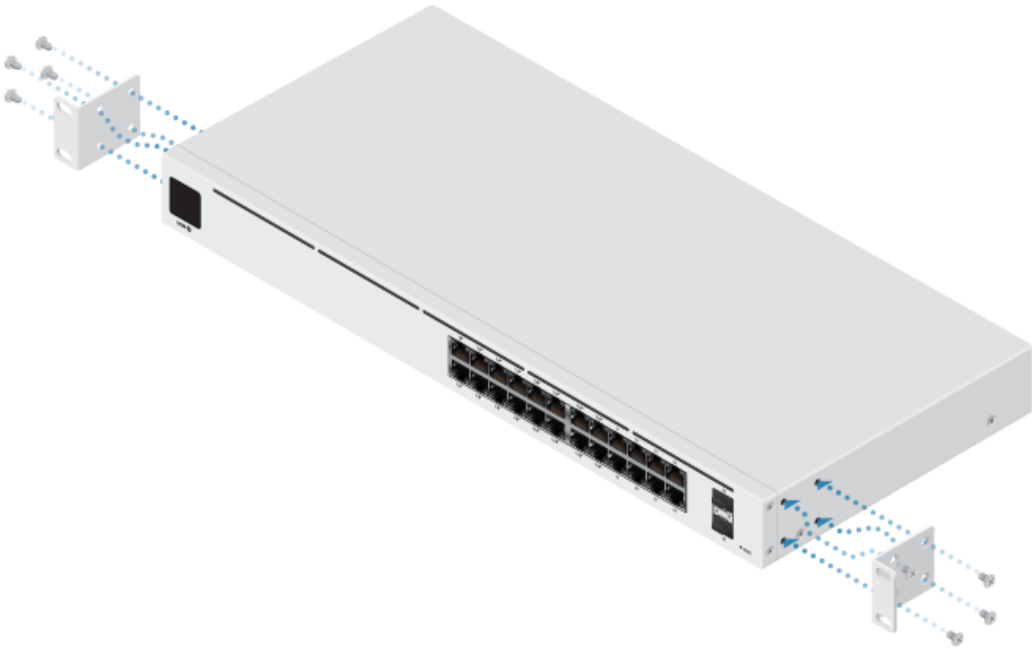
## Hardware Installation



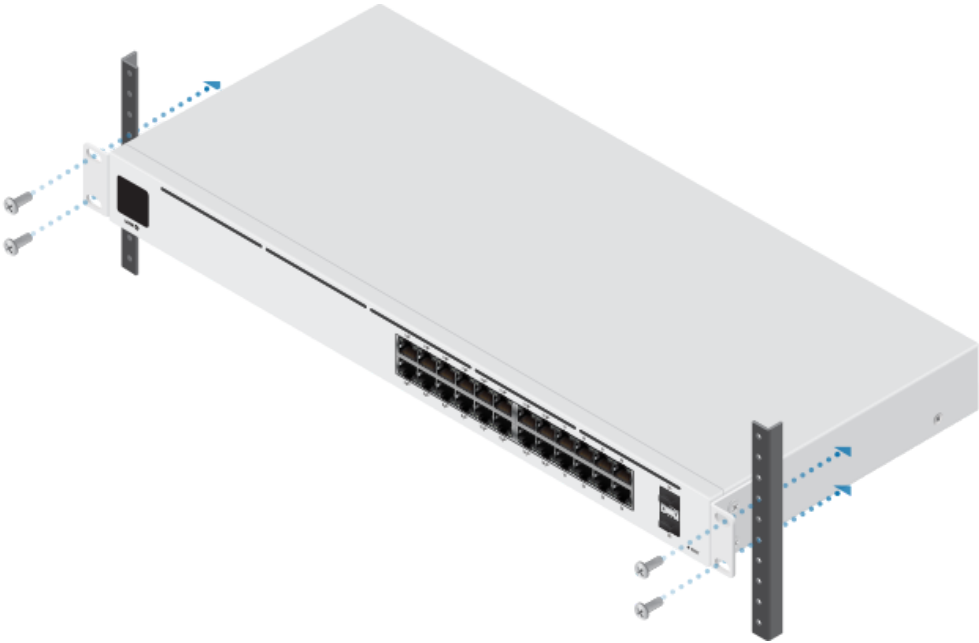
# USW-24-POE Quick Start Guide

UniFi Switch.

1.



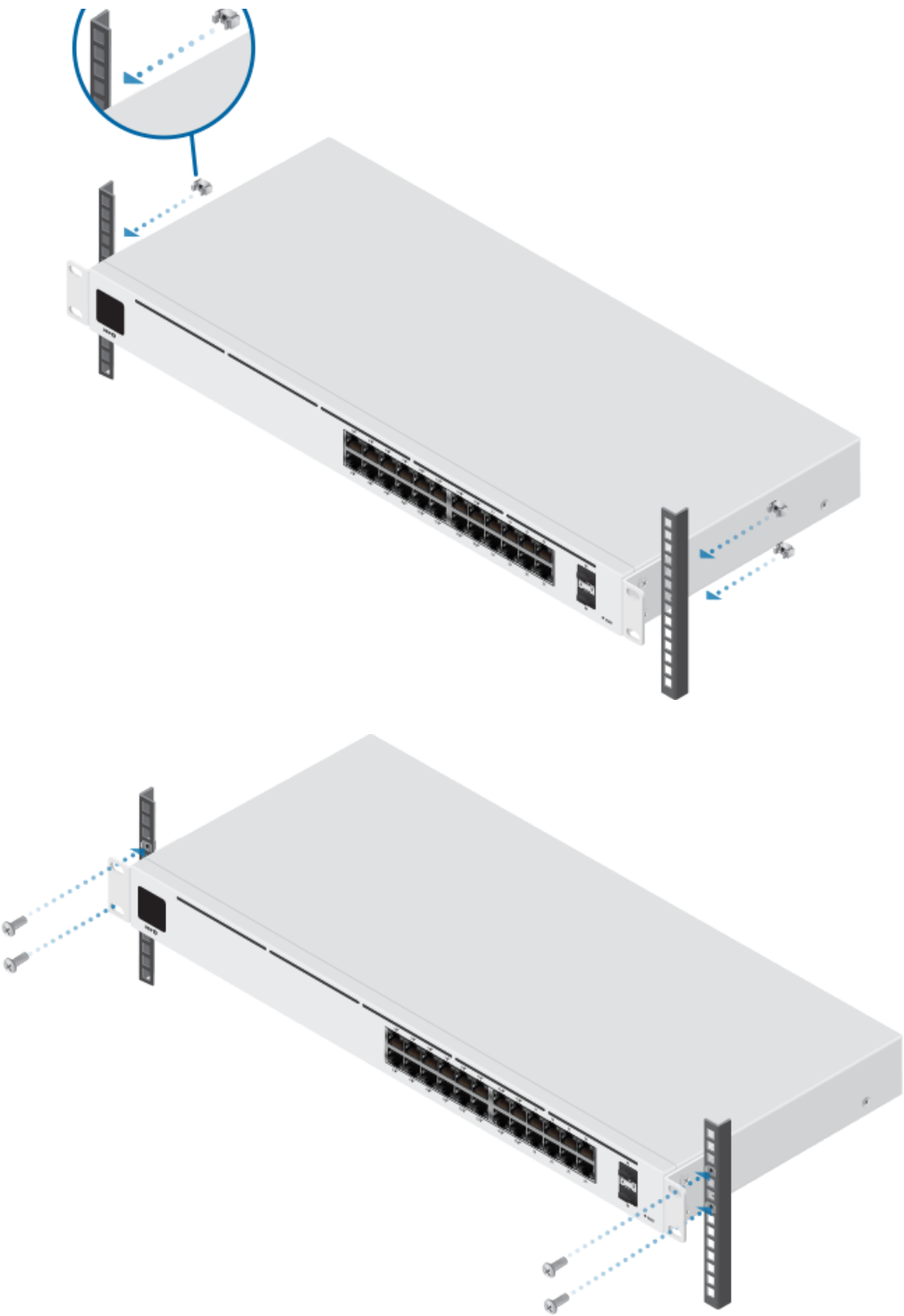
2.



OR



USW-24-POE Quick Start Guide



Connecting Power

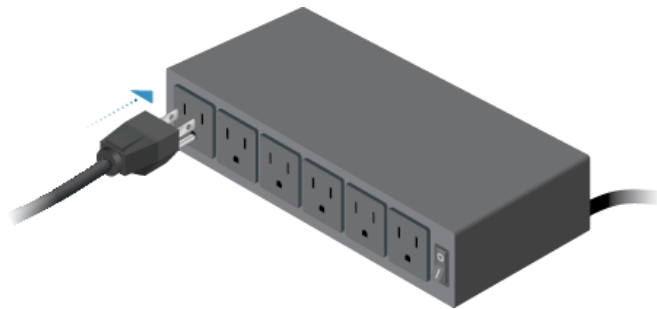
1.



## USW-24-POE Quick Start Guide



2.



## Connecting Ethernet



**Note:** If you are connecting PoE devices, check the display to see how



## USW-24-POE Quick Start Guide

### Connecting SFP

1.



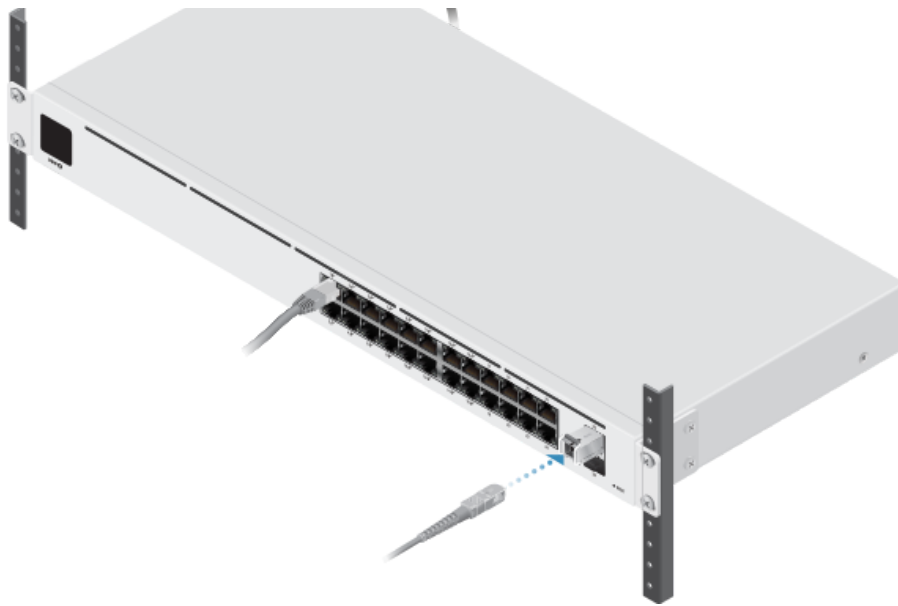
2.



3.



## USW-24-POE Quick Start Guide



For information about compatible fiber SFP modules, visit:  
[ubnt.link/UniFi\\_SFP\\_DAC\\_Compatibility](https://ubnt.link/UniFi_SFP_DAC_Compatibility)

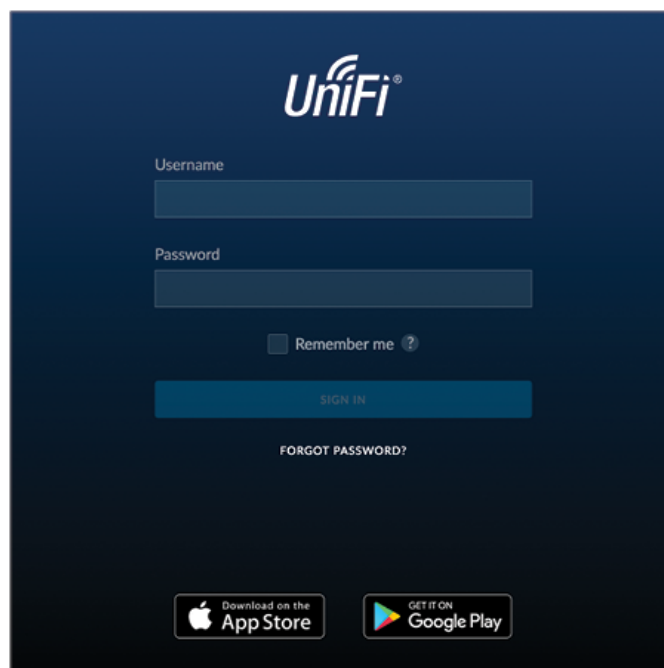
## Software Installation

Download and install the latest version of the UniFi Controller software at [ui.com/download/unifi](https://ui.com/download/unifi) and follow the on-screen instructions.



**Note:** If you already have UniFi Controller v5.11.x or newer installed, skip to [“Adopting the UniFi Switch”](#).

After you have installed the software and run the UniFi Installation Wizard, a login screen will appear for the UniFi Controller management interface. Enter the admin name and password that you created and click Sign In.





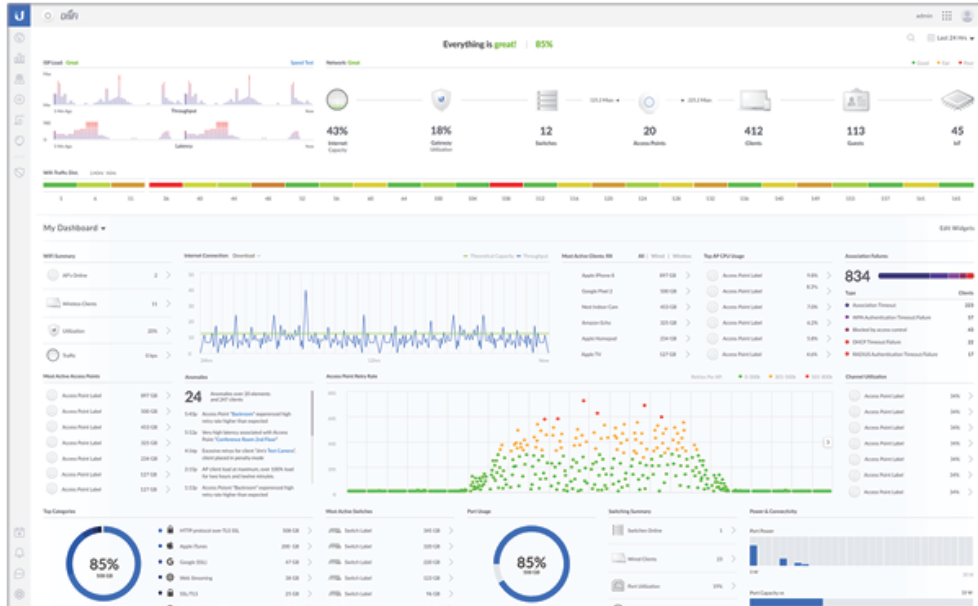
## USW-24-POE Quick Start Guide

To adopt the UniFi Switch, proceed to [“Adopting the UniFi Switch”](#).

For information on configuring and using the UniFi Controller software, refer to the User Guide on the website: [ui.com/download/unifi](https://ui.com/download/unifi)

## Adopting the UniFi Switch

1. From the UniFi Controller dashboard, click Devices in the left menu bar.



2. On the Devices screen, locate the UniFi Switch in the list of devices under the Model column. To adopt the UniFi Switch, click Adopt.

The screenshot shows the 'Devices' screen in the UniFi Controller. It displays a table of devices with columns for Device Name, IP Address, Status, Model, Version, and Uptime. The table is filtered to show 'Gateway/Switches (8)' and 'APs (3)'. The devices listed are:

DEVICE NAME	IP ADDRESS	STATUS	MODEL	VERSION	UPTIME
USG	10.2.50.21	CONNECTED	UniFi Security Gateway 4P	4.4.18.5052172	73d 17h 52m 34s
US-6XG	192.168.1.155	CONNECTED (1000 FDX)	UniFi Switch XG 6POE	4.0.5.9550	55m 40s
US-XG	192.168.1.35	CONNECTED (1000 FDX)	UniFi Switch 16XG	4.0.1.9421	11d 3h 57m 49s
US16P-150W	192.168.1.176	CONNECTED	UniFi Switch 16 POE-150W	4.0.5.9550	54m 32s
US8P-150W	192.168.1.31	CONNECTED	UniFi Switch 8 POE-150W	4.0.1.9421	35d 22h 56m 38s
US8P-150W	192.168.1.248	CONNECTED	UniFi Switch 8 POE-150W	4.0.5.9550	56m 34s
US8P-60W	192.168.1.45	CONNECTED	UniFi Switch 8 POE-60W	4.0.5.9550	12m 47s
fccecd770d9f	192.168.1.152	PENDING ADOPTION	UniFi Switch 24 POE	4.0.5.9550	1h 27m 36s

At the bottom, it shows '1-8 of 8 devices' and 'Rows per page: 50'.

3. The System LED on the UniFi Switch will turn blue to confirm that it has been successfully adopted.

## Specifications



## USW-24-POE Quick Start Guide

Dimensions	442.4 x 200 x 43.7 mm (17.42 x 7.87 x 1.72")
Weight	3.00 kg (6.61 lb)
With Rackmount Brackets	3.09 kg (6.81 lb)
Interfaces	
Networking	(24) 10/100/1000 RJ45 Ports (2) 1G SFP Ethernet Ports
Management	Ethernet In-Band
Power Method	100-240VAC/50-60 Hz, Universal Input
Power Supply	AC/DC, Internal, 120W
Supported Voltage Range	100 to 240VAC
Max. Power Consumption (Excluding PoE Output)	25W
LEDs	
System	Status
RJ45 Data Ports	PoE; Speed/Link/Activity
SFP Data Ports	Link/Activity
ESD/EMP Protection	Air: ± 16 kV, Contact: ± 12 kV
Shock and Vibration	ETSI300-019-1.4 Standard
Operating Temperature	-5 to 40° C (23 to 104° F)
Operating Humidity	10 to 90% Noncondensing
Certifications	CE, FCC, IC

PoE	
PoE Interfaces	
Ports 1-16	POE+ IEEE 802.3af/at (pins 1, 2+; 3, 6-)
Max. PoE Wattage per Port by PSE	
802.3at	32W
Voltage Range 802.3af Mode	44-57V
Voltage Range 802.3at Mode	50-57V

## Safety Notices

1. Read, follow, and keep these instructions.
2. Heed all warnings.
3. Only use attachments/accessories specified by the manufacturer.



**WARNING:** Failure to provide proper ventilation may cause fire hazard. Keep at least 20 mm of clearance next to the ventilation holes for adequate airflow.



## USW-24-POE Quick Start Guide



**WARNING:** Do not use this product in location that can be submerged by water.



**WARNING:** Avoid using this product during an electrical storm. There may be a remote risk of electric shock from lightning.

## Electrical Safety Information

1. Compliance is required with respect to voltage, frequency, and current requirements indicated on the manufacturer's label. Connection to a different power source than those specified may result in improper operation, damage to the equipment or pose a fire hazard if the limitations are not followed.
2. There are no operator serviceable parts inside this equipment. Service should be provided only by a qualified service technician.
3. This equipment is provided with a detachable power cord which has an integral safety ground wire intended for connection to a grounded safety outlet.
  - a. Do not substitute the power cord with one that is not the provided approved type. Never use an adapter plug to connect to a 2-wire outlet as this will defeat the continuity of the grounding wire.
  - b. The equipment requires the use of the ground wire as a part of the safety certification, modification or misuse can provide a shock hazard that can result in serious injury or death.
  - c. Contact a qualified electrician or the manufacturer if there are questions about the installation prior to connecting the equipment.
  - d. Protective earthing is provided by Listed AC adapter. Building installation shall provide appropriate short-circuit backup protection.
  - e. Protective bonding must be installed in accordance with local national wiring rules and regulations.

## Limited Warranty

[ui.com/support/warranty](https://ui.com/support/warranty)

The limited warranty requires the use of arbitration to resolve disputes on an individual basis, and, where applicable, specify arbitration instead of jury trials or class actions.

## Compliance

### FCC

Changes or modifications not expressly approved by the party responsible for compliance could void the user's authority to operate the equipment.

This device complies with Part 15 of the FCC Rules. Operation is subject to the following two conditions.

1. This device may not cause harmful interference, and



## USW-24-POE Quick Start Guide

This equipment has been tested and found to comply with the limits for a Class A digital device, pursuant to Part 15 of the FCC Rules. These limits are designed to provide reasonable protection against harmful interference when the equipment is operated in a commercial environment. This equipment generates, uses, and can radiate radio frequency energy and, if not installed and used in accordance with the instruction manual, may cause harmful interference to radio communications. Operations of this equipment in a residential area is likely to cause harmful interference in which case the user will be required to correct the interference at his own expense.

### ISED Canada

CAN ICES-3(A)/NMB-3(A)

### Australia and New Zealand



Warning: This equipment is compliant with Class A of CISPR 32. In a residential environment this equipment may cause radio interference.

### CE Marking

CE marking on this product represents the product is in compliance with all directives that are applicable to it.



### WEEE Compliance Statement

### Declaration of Conformity

### Online Resources





# USW-24-POE Quick Start Guide

© 2021 Ubiquiti Inc. All rights reserved.