

## LED Wall Pack Light

# WP-01-G4



### Better solutions for Led Wall Pack Light



**IP65 w ater-proof**



**AC100-277V 50/60Hz**



**Easy Installation**



**140Lm/w**

**Operating Temp:** -40°C ~+50°C(C5)  
-20°C ~+50°C(C4)

**Storage Temp:** -40°C ~+80°C

### Options

#### Driver

Sosen Driver  
UL/TUV/CE/SAA Driver

#### Voltage

AC100-277V for C4(30W/50W)  
AC120-277V for C4/C5  
AC120-347V for C5

#### CCT

3000K  
4000K  
5000K



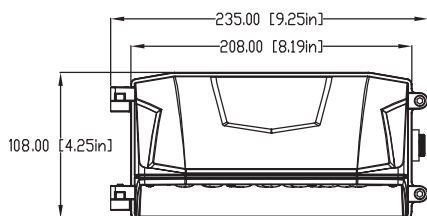
### Application

LED Wall Pack Light series can be widely used as Exterior or interior LED lighting for Hotels, Garages, Commercial Buildings, Public areas, Schools and Hospitals, etc.

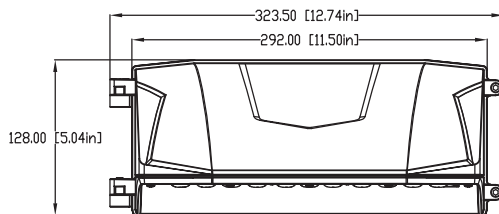
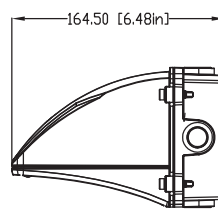
### Specifications

Item	Power	Luminous Ef ficacy	Leds	CRI	Weight	Lens
WP30W-01-G4	30W	140Lm/W	SMD 3030	>80	1.85KG(4.10lbs)	130x60°
WP50W-01-G4	50W	140Lm/W	SMD 3030	>80	1.85KG(4.10lbs)	130x60°
WP80W-01-G4	80W	140Lm/W	SMD 3030	>80	4.50KG(9.92lbs)	130x60°
WP100W-01-G4	100W	140Lm/W	SMD 3030	>80	4.50KG(9.92lbs)	130x60°

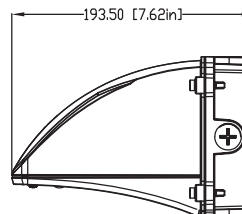
### Dimensions(mm)



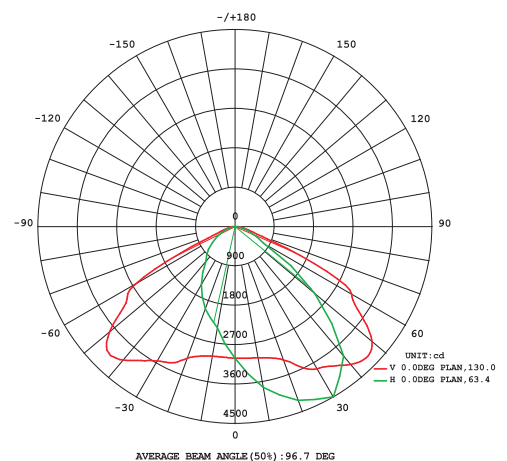
30W/50W



80W/100W

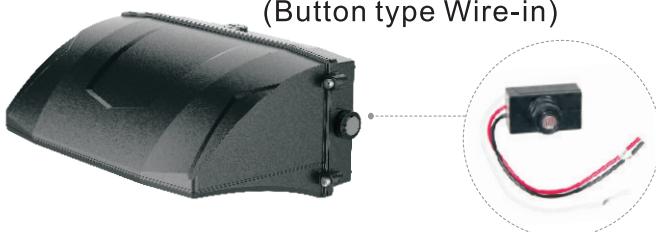


### Photometry

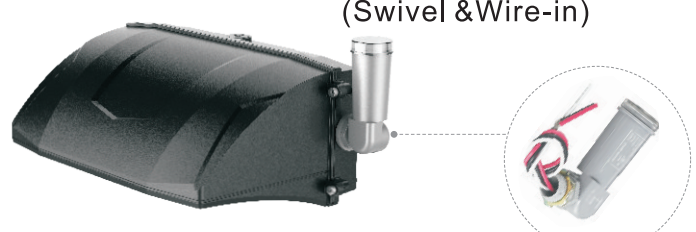


### Sensor Optional

**Thermal Type Photocontrol**  
(Button type Wire-in)



**Thermal Type Photocontrol**  
(Swivel & Wire-in)



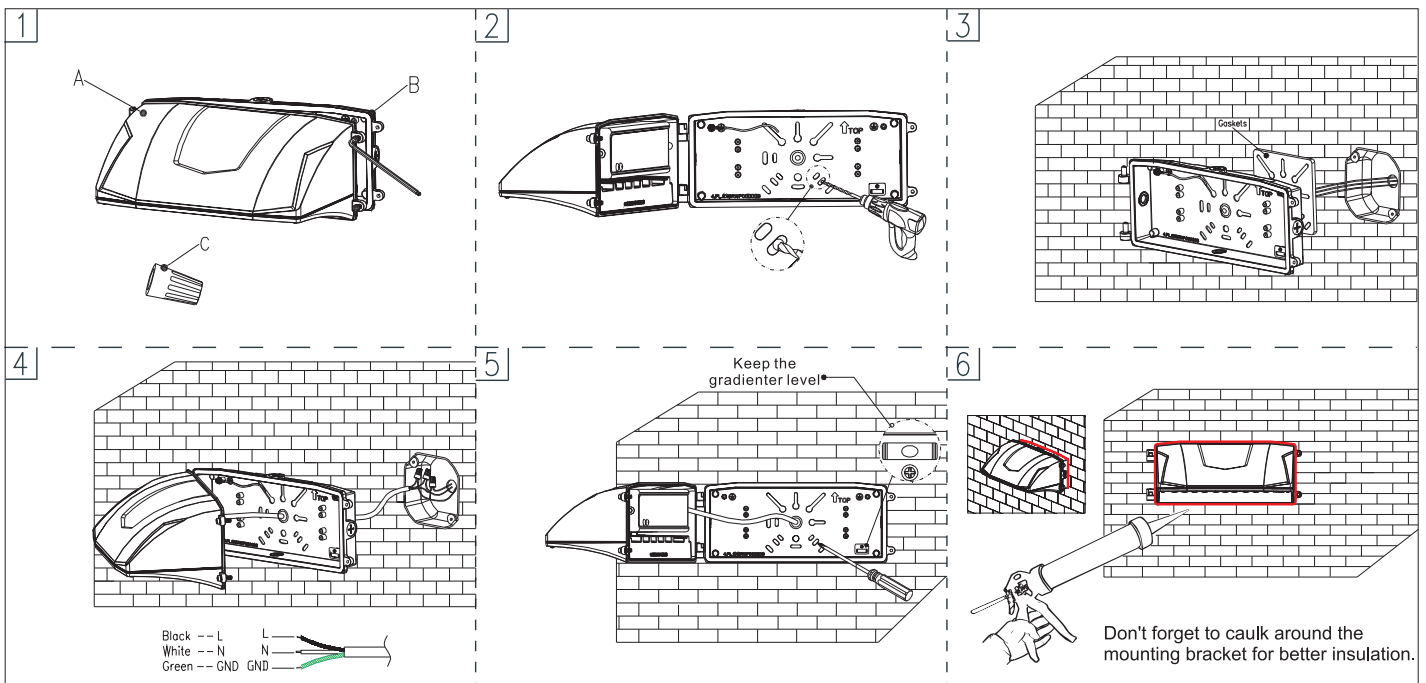
# WP-01-G4

## LED Wall Pack Light

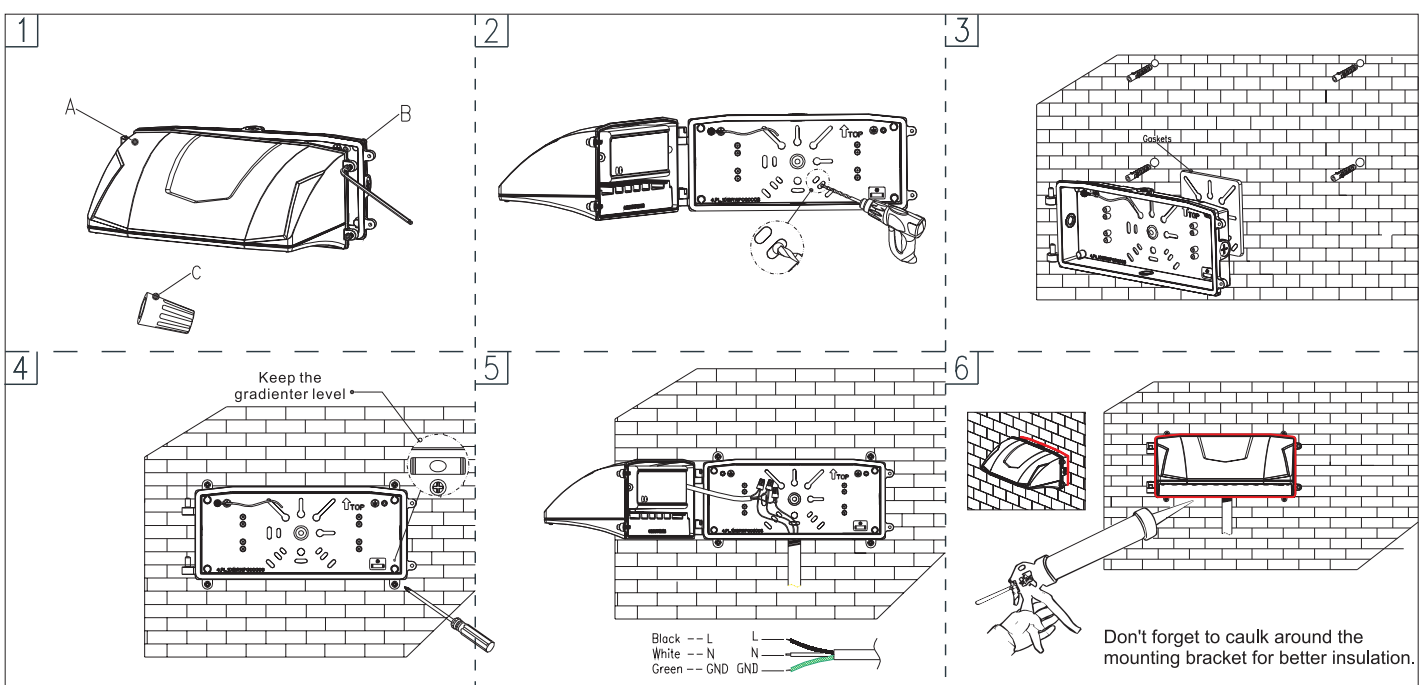


## Installation and use

### P1-Mounting with J-box



### P2-Mounting with a 1/2" conduit at the bottom



## Packing Spec

Item	Box			Cart on		
	Measurement (mm)	Gross w eight	Pcs/box	Measurement (mm)	Gross w eight	Pcs/box
WP30W/50W-01-G4	L260*W158*H220	2.2kg(4.85lbs)	1	L500*W270*H460	13.5kg(29.76lbs)	6
WP80W/100W-01-G4	L335*W175*H246	3.9kg(8.60lbs)	1	L370*W345*H260	8.62kg(19.00lbs)	2