

Legrand cabling system LCS² enclosures

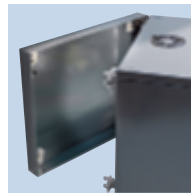
LCS² 19" wall-mounting cabinets and accessories



0 462 01



0 462 11



Pivoting cabinet 0 462 11



0 465 01

Technical characteristics p. 722-723

IP 20 - IK 08

With reversible curved print screen glass safety door

Pivoting side panels, tool-free removal from inside

Lock closure with key 2433 A

Equipped with 2 x 19" uprights with depth adjusting aid

Supplied with earthing kit

Top and bottom grilles for natural ventilation, capable of taking a fan in the high part

Charcoal grey RAL 7016

Pack	Cat.Nos	Fixed LCS ² 19" cabinets			
		Easier cable management: ability to fix cable guide connecting rings Cat.Nos 0 465 41/42 and cable ties (p. 713)			
		DLP format cable entries at the top and bottom, bendable, with ability to attach cables using cable ties			
		Rear pre-cut cable entries			
		Cabinet depth 400 mm			
		Capacity	Width (mm)	Height (mm)	Load capacity (kg)
1	0 462 00	6 U	600	350	18
1	0 462 01	9 U	600	500	27
1	0 462 02	12 U	600	600	36
1	0 462 03	16 U	600	800	48
		Cabinet depth 580 mm			
1	0 462 06	9 U	600	500	27
1	0 462 07	12 U	600	600	36
1	0 462 08	16 U	600	800	48
1	0 462 09	21 U	600	1000	63
		Pivoting LCS² 19" cabinets			
		Cabinets composed of:			
		- base (wall-fixing)			
		- pivoting body allowing free access to the rear of the cabinet to facilitate installation and maintenance			
		Reversible pivoting direction			
		Full cable entry plate at top and bottom, a brush plate can be fitted Cat.No 0 462 55			
		Cabinet depth 600 mm			
		Capacity	Width (mm)	Height (mm)	Load capacity (kg)
1	0 462 11	9 U	600	500	27
1	0 462 12	12 U	600	600	36
1	0 462 13	16 U	600	800	48
1	0 462 14	21 U	600	1000	63

Pack	Cat.Nos	Fixed shelves	
		Quick fixing without screws	
		Heigh 2 U	
		Max. load 15 kg	
		Black RAL 9005	
		Quick fixing on 2 x 19" uprights	
1	0 465 00	Depth 115 mm. For cabinets depth 400, 580 and 600 mm	
1	0 465 01	Depth 200 mm. For cabinets depth 400, 580 and 600 mm	
1	0 465 02	Depth 360 mm. For cabinets depth 580 and 600 mm	
		Thermal management	
		Fan	
		2.5 m power supply cable	
1	0 462 60	230 V~ fan	
		Thermostat	
1	0 348 48	Adjustable from 5 to 60 °C, 230 V~, 50/60 Hz	
		NO contact (10A) and NC contact (5 A)	
		Fixed by magnet	
		Cable entry	
1	0 462 55	Cable entry plate with brush	
		For pivoting cabinets	
		Cable management rings	
		Direct clipping on front structural uprights of 9 U to 21 U fixed cabinets (Cat.No 0 465 41 only) and on central upright of 580 mm depth cabinets	
4	0 465 41	1 U, plastic. Useable section 1890 mm ²	
4	0 465 42	2 U, plastic. Useable section 4070 mm ²	
		Accessories	
1	0 462 64	Set of 4 caster wheels for assembly on pivoting cabinets	
		Total load permissible on the 4 casters: 120 kg	

