

AU70FR

Name: **Junction box**

Junction box for EI60 and EI30 fire rated ceilings

System Ideal

Type: AU70FR

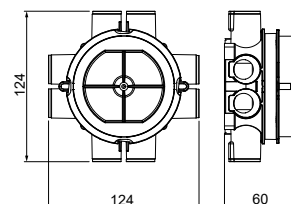
EAN: 6438199005911

Description: The box has two screw towers with c/c 70mm (for M4 screws), which fits all standard ceiling covers and lamp outlets (also DCL standard). Installation hole with a hole saw and reworking of the hole is forbidden (specified hole saw Ø84mm, drill hole max. 86mm). The box shall be installed to the center of the drill hole. The green adapter ring supplied with the box is used with single plaster board ceiling (12.5mm), and the ring is removed with double plaster board (2 x 12.5mm). If the plaster boards are 15mm thick, a red adapter ring is also used; in one position the lift is 2.5mm (1 x 15mm plate) and in another position 5mm (2 x 15mm plate). The box has one opened inlet for a 16/20 mm tube, and totally 8 fixed inlets. The box comes with a lid AU67.70.

Manufactured from halogen free material (IEC/61249-2-21), the box complies with the IEC/EN60670:2005 glow wire test (850 °C).

Package: 20

Unit: PCS



Dimensions

For plastic pipe Ø16/20mm

Electrical quantities

Rated voltage 400 V

thermal conditions

Operating temperature -25 ... 90 °C

ETIM

ETIM 7 EC002601 (EC002601)