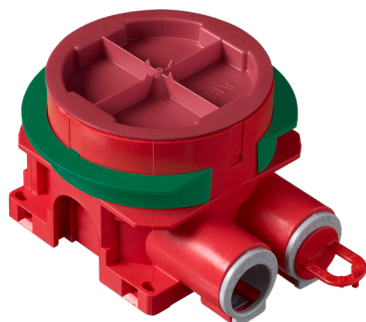


08/2021

# Fire-retardant mounting and junction boxes

## For EI30 and EI60 fire-rated ceilings and walls



**01 AU60.10FR**  
Mounting box



**02 AU70FR**  
Junction box

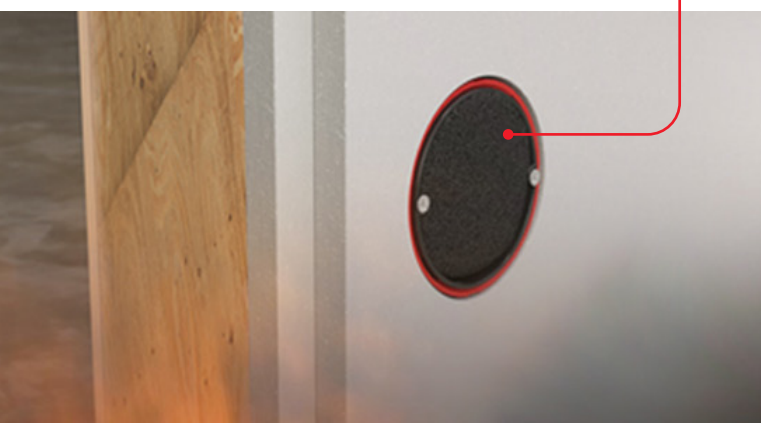
Boxes AU60.10FR and AU70FR contain a fire cushion, made of expanding material, that prevents fire from spreading to ceiling and wall structures.

Mounting box AU60.10FR and junction box AU70FR can be installed in EI30 and EI60-fire-rated ceilings and partition walls (fire-rated plasterboard ceiling/wall according to the plasterboard manufacturer's or structural engineer's instructions).

### Properties

- Include expanding fire cushion to prevent fire from spreading to ceiling and roof structures.
- Can be used with boards of different thicknesses and board combinations without accessories due to adapter rings.
- Green adapter rings and box covers are made of post-consumer recycled plastic and reducers are made of post-industrial recycled plastic.
- Made of halogen free material (IEC/61249-2-21).

The fire cushion expands when the temperature rises as a result of fire. The expansion of the material in the event of fire seals the box, so the ceiling or wall structure retains its specified fire rating.



## Order information

Type	Product ID	EAN	Description	Package
<a href="#">AU60.10FR</a>	2TKA00004281	6438199008172	Mounting box for EI60 and EI30 fire rated walls	50
<a href="#">AU70FR</a>	2TKA00003942	6438199005911	Fire-rated ceiling junction box for EI30 and EI60-rated ceilings	20

ABB Oy  
Porvoon Sisäkehä 2, PO Box 16  
FI-06101 Porvoo, Finland  
Phone: +358 10 22 11

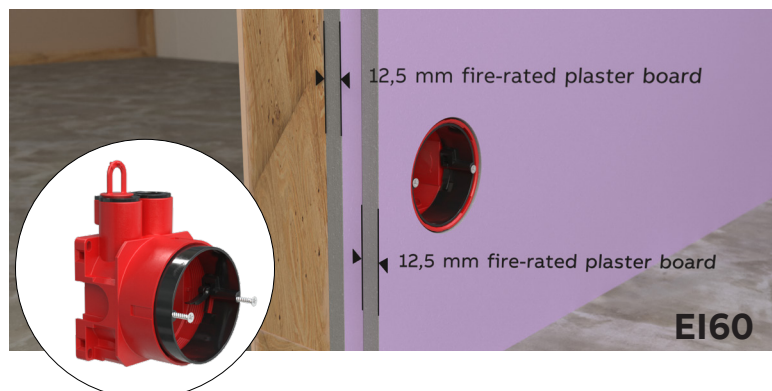
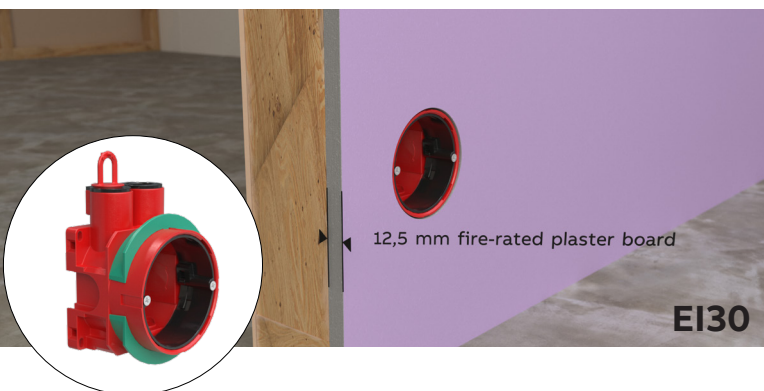
## Versatility with adapter rings

### For EI30 and EI60 fire-rated ceilings and walls

#### AU60.10FR Mounting box for EI60 and EI30 fire rated walls

AU60.10FR is suitable for 1 - 2 - 3 layers of gypsum boards, and all other wall structures with wall thickness 12,5 – 40mm without accessories. The green adapter ring, delivered with the box, is used in single-board walls (12-13 mm). The ring is removed when the wall thickness is two boards (24-26 mm).

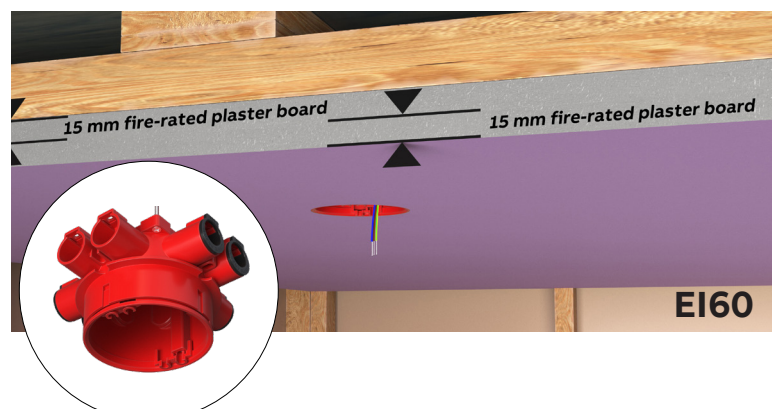
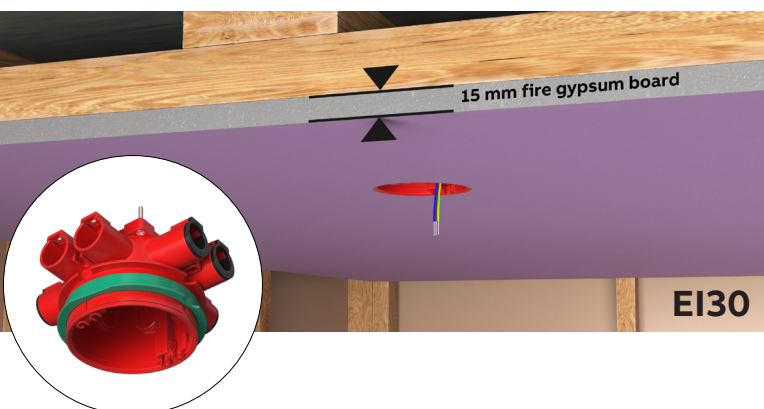
AU60.10FR mounting box includes a rotating, steplessly adjustable installation ring enabling installation on boards with a thickness of 12,5-40mm. In case of triple boards, installation ring is lifted to needed height. The ring can be tilted 0-4°. Can be mounted with truss fixture or box support. Screw distance is c/c 60mm.



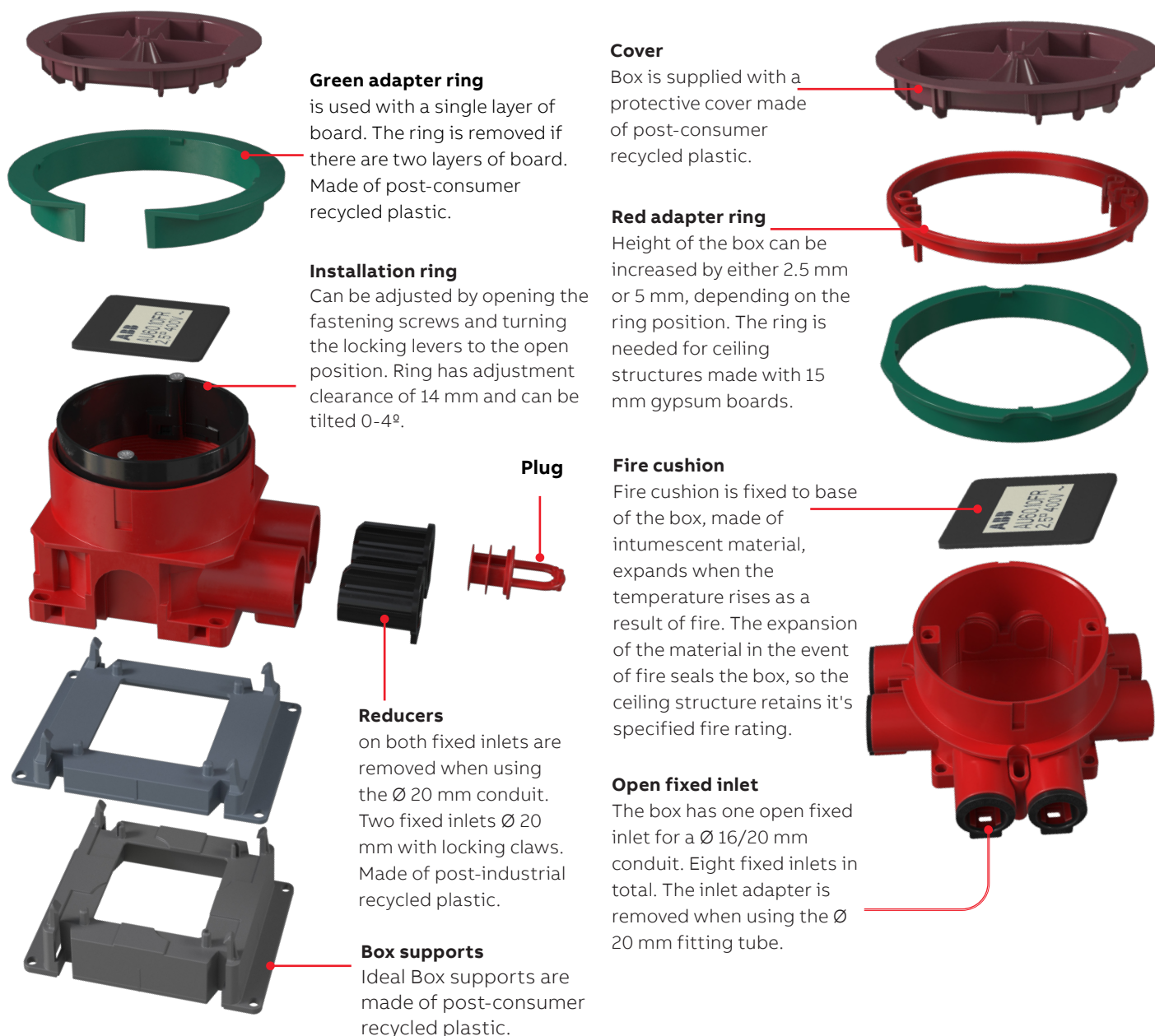
#### AU70FR Junction box for EI30 and EI60-rated ceilings

AU70FR can be installed in both load-bearing and non-load-bearing roof structures, and can be used with both intermediate floors and roofs. The box has two screw towers with c/c 70mm (for M4 screws), which fits all standard ceiling covers and lamp outlets (also DCL standard). The green adapter ring supplied with the box is used with single plaster board ceiling (12.5mm).

Green ring is removed with double plaster board (2 x 12.5mm). If the plaster boards are 15mm thick, a red adapter ring is also used; in one position the lift is 2.5mm (1 x 15mm plate) and in another position 5mm (2 x 15mm plate). The box comes with a lid AU67.70.



## AU60.10FR and AU70FR features



### Step towards sustainability

We are working towards making System Ideal and System ABB the most sustainable ranges of flush mounted boxes on Nordic market. By the end of 2021 ranges will be produced in carbon neutral Nordic based production site with highest content of recycled base material on market (up to 50%).