

AU60.10FR

Name: **Mounting box**

Mounting box for EI60 and EI30 fire rated walls

System Ideal

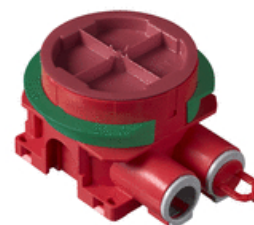
Type: AU60.10FR

EAN: 6438199008172

Description: AU60.10FR is installation box which is certified to be used in EI60 and EI30 fire rated walls. The mounting box includes a rotating, steplessly adjustable extension ring enabling installation on boards with a thickness of 12-40mm. Screw distance is c/c 60mm. The green adapter ring, delivered with the box, is used in single-board walls (12-13 mm). The ring is removed when the wall thickness is two boards (24-26 mm). In case of triple boards, extension ring is lifted to needed height. The box has two fixed inlets, both of them are open (other sealed with a plug) and both inlets are equipped with a locking device in metal for reliable connection between the conduits and the box. Both flexipipe and stiff/rigid conduits can be connected to the inlets and both inlets have 16/20 mm piping adapters. The extension ring can be tilted 0-4°. Made of halogen free material (IEC/61249-2-21) and fulfills the requirements of the glow wire test according to the standard IEC/EN60670: 2005 (850 °C).

Package: 50

Unit: PCS



Dimensions

For plastic pipe Ø16/20mm

Electrical quantities

Rated voltage 400 V

thermal conditions

Operating temperature -25 ... 60 °C

ETIM

ETIM 7 EC002601 (EC002601)

ETIM 8 EC002601 (EC002601)

ETIM 8

Mounting method Flush mounted (plaster)

Shape Round

Construction type Device connection box (round/square)

Model Single

Provided with revolving ring yes

Connectable yes

Equipped with None

AU60.10FR

Diameter	71 mm
Depth	58 mm
Internal depth	54 mm
For number of electric fittings	1
Mounting switching equipment	Screwing
With screws	yes
Housing feed-through by break-out opening	yes
Housing feed-through by seal membrane	no
Housing feed-through by nozzle	yes
Housing feed-through by step membrane	no
For tube diameter	16/20 mm
Pipe locking	yes
Pipe locking optional	no
Inlet from the rear	yes
Number of inlets	2
Number of included spouts	2
Material	Plastic
Halogen free	yes
Surface protection	Untreated
Colour	Blue
Degree of protection (IP)	IP3X
Cover model	Construction protective cover
Transparent cover	no
Cover attachment	Snapped on
Sealable	no
Circuit integrity	None
With screening	no
Air tight	no
Max. conductor cross section	0 mm ²
Number of poles of the clamp	
Clamp position fixed	no
Luminaire hook mounting	no
Nozzle	None
With nail lugs	yes
Special application	Fire protection