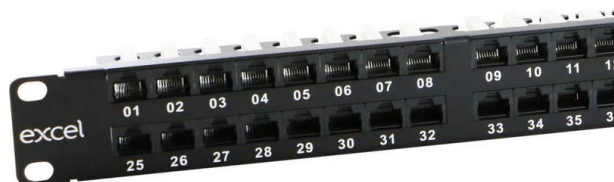


# Excel Category 6 (UTP) Unscreened Right Angle Patch Panel 48 Port 1U - Black

Item Code: 100-394

**excel**  
without compromise.



✕ Available in 24 or 48 ports

✕ Backwards compatible

✕ Rear cable management

✕ LSA Style Termination Blocks

✕ Cage nuts and mini cable ties included

✕ T568A/B Wiring Configuration

## Product Overview

Excel Category 6 Unscreened Patch Panels have been designed to meet or exceed the latest ISO and TIA requirements for category 6 compliance. Ease of installation is assured with built in rear cable management at a 90° angle to the panel fascia.

Each panel has a screen printed labelling field positioned above each port, included with the panel is a pre printed self adhesive labelling sheet ? pre numbered 1- 96, for fast and easy labelling on site. Termination can be made using LSA compatible tools, and cable tie bridges are positioned between the IDC blocks to relieve cable stress.

## Product Specifications

Feature	Values
Number of ports - loaded	48
Type of connector	RJ45 8(8)
Category	6
Connection type	LSA
Number of rack units (RU)	1
Colour	Black
Mounting method	19 inch mounting
Height	44 mm
Width	480 mm
Depth	96 mm

# Excel Category 6 (UTP) Unscreened Right Angle Patch Panel 48 Port 1U - Black

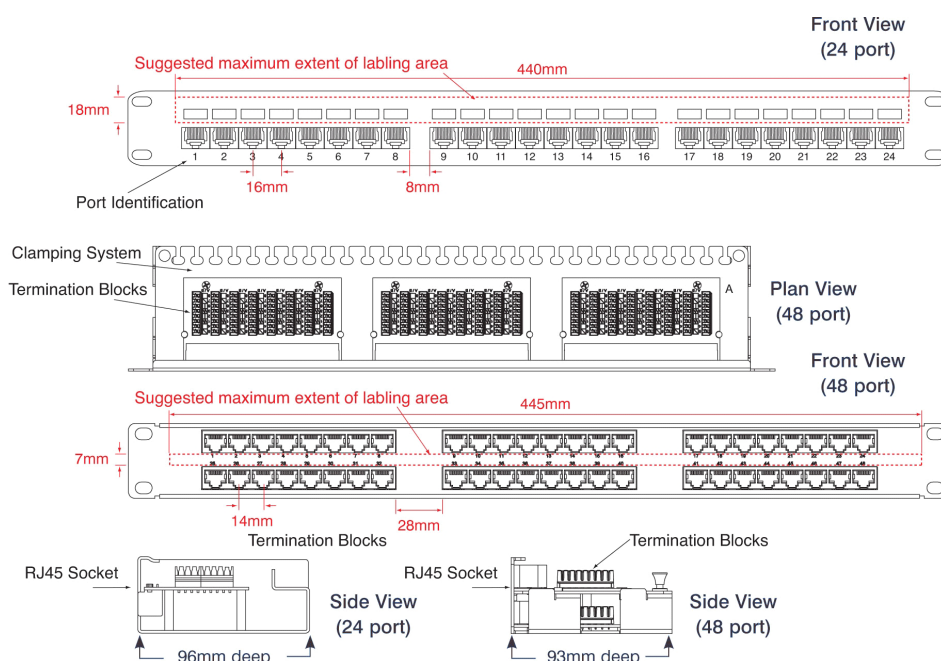
Item Code: 100-394



## Additional specifications

Features	Values
Wiring Specification	T568A/T568B
RJ45 Jack Min life expectancy	750 insertions
RJ45 Jack contact	50 microinch gold over 100 microinch nickel undercoat
IDC Contacts Max life expectancy	200 terminations
Contact compatibility	22 to 26AWG
Operating Temperature Range	-10° to 60°C
Storage Temperature Range	-40° to 68°C
Relative Humidity	10% to 90%
Panel material	SPCC
Jack housing material	PBT, 30% glass fiber filled
IDC material	Phosphor bronze, tin over nickel undercoat

## Product drawing



# Excel Category 6 (UTP) Unscreened Right Angle Patch Panel 48 Port 1U - Black

Item Code: 100-394



## Standards

Applicable standard	Detail
ISO/IEC 11801-1:2017	Information technology - Generic cabling for customer premises: Part 1 General Requirements
IEC 61156-5:2009+AMD1:2012 CSV	Multicore and symmetrical pair/quad cables for digital communications - Part 5: Symmetrical pair/quad cables with transmission characteristics up to 1 000 MHz - Horizontal floor wiring - Sectional specification
EN 50173-1:2011	Information technology. Generic cabling systems - General requirements
EN 50173-2:2007 + A1:2010	Information technology. Generic cabling systems - Office premises
ANSI/TIA 568-2.D	Balanced Twisted-Pair Telecommunications Cabling and Components Standards
ANSI/EIA-310-E	Electronic Industries Association standard for horizontal spacing, vertical hole spacing, rack opening and front panel width
RoHS	Restriction of Hazardous Substances - Compliant

## Part Number Table

Part Number	Description
100-394	EXCEL CAT6 48PT 1U R/ANG PCB PATCH PANEL BLACK

Excel is a world class premium performing end to end infrastructure solution designed, Manufactured, supported and delivered without compromise.

Contact us at [sales@excel-networking.com](mailto:sales@excel-networking.com)



E&OE. Excel is a registered trade name of Mayflex Holdings Ltd.