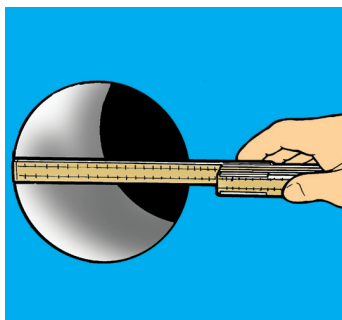
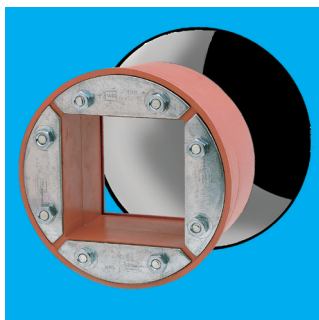


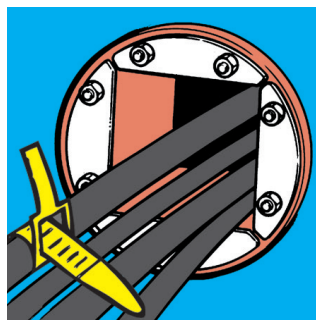
# RGP installation



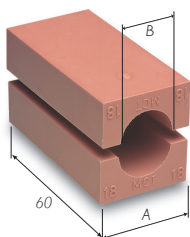
**1** Measure the opening and check that the measurement is within tolerance. The hole tolerance is equal to the outer diameter of the frame  $-0/+2$  mm.



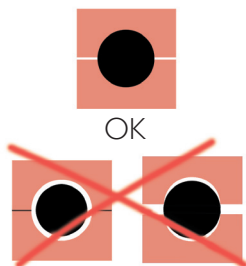
**2** Insert the RGP frame in the hole. Do not lubricate the hole or the outside of the RGP frame.



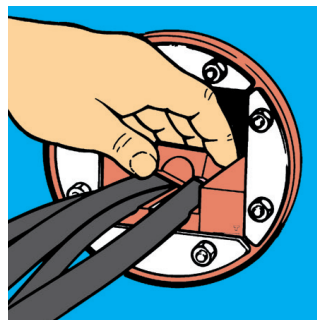
**3** Position the RGP frame correctly in the opening. Check that the frame is clean and pull through the cables. Position the largest cables at the bottom. Measure the diameter of the cables and choose suitable blocks.



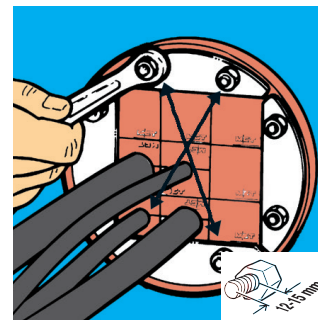
**4** The blocks are identified by their width (A) and hole diameter (B). A block that is 30 mm wide and has a hole diameter of 18 mm is marked 30/18. This marking is cast into the block.



**5** The diagram marked OK shows how the cable should look when correctly fitted.



**6** Begin packing



**7** Tighten the nuts diagonally until 12-15 mm of thread is visible.

## Pressure-tight installation RGP

All contact surfaces between the inside of the frame and the RGP plug must be cleaned carefully prior to installation. Do not use any lubricant on these surfaces. All blocks must be lubricated carefully with MCT Brattberg lubricant. The penetration must not be subjected to pressure for at least 48 hours after installation. This is to allow the pressure to equalise throughout the penetration. It will take more time for the pressure to equalise at temperatures below 20°C.

Note: If the installation is subjected to pressure, all components must be replaced after removal and refitting.