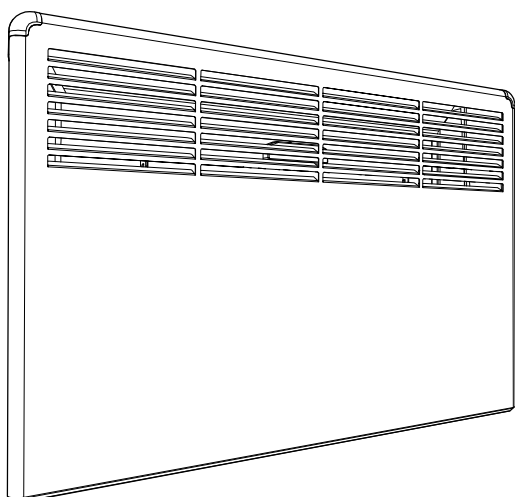


BETA-BT series



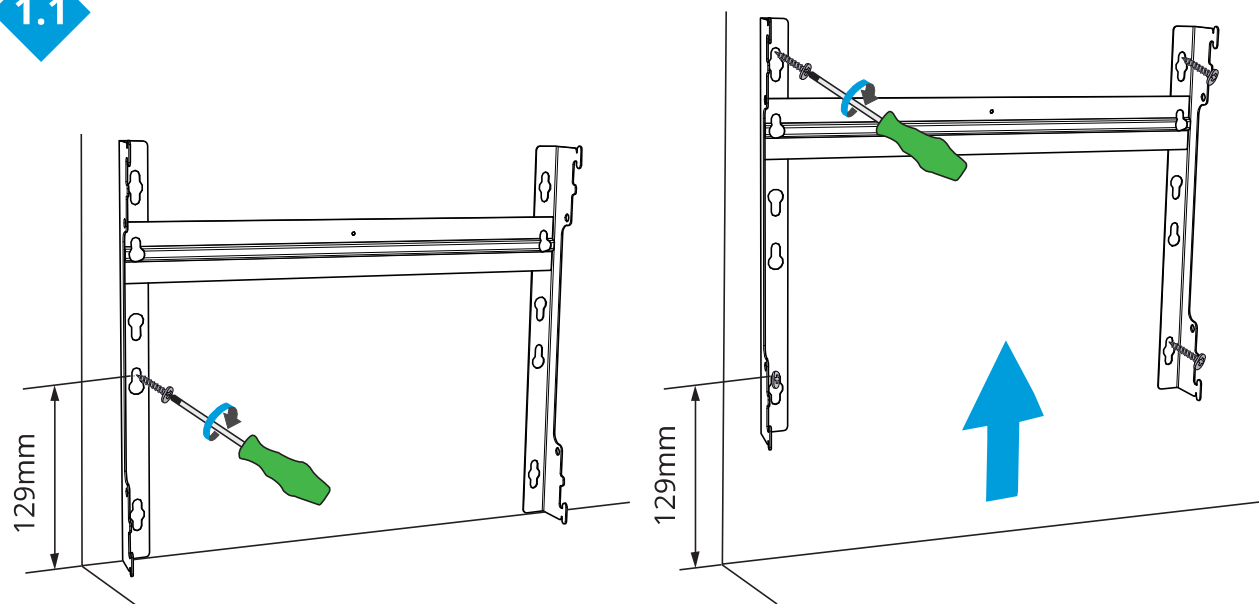
(ENG)	Installation and Operation Instructions.....	10
(FIN)	Asennus- ja käyttöohjeet.....	13
(SWE)	Installations- och bruksanvisningar.....	16
(DEU)	Installations- und Bedienungsanleitung.....	19
(EST)	Paigaldus- ja kasutusjuhised	22
(FRA)	Instructions d'installation et d'utilisation.....	25
(LAV)	Uzstādīšanas un ekspluatācijas instrukcijas.....	28
(LIT)	Montavimo ir eksploatavimo instrukcijos.....	31
(NOR)	Installeringsinstruksjoner og bruksanvisning.....	34
(POL)	Instrukcja instalacji i obsługi.....	37
(SRB)	Uputstvo za ugradnju i rad.....	40
(UKR)	Інструкції з установки та експлуатації.....	43
(RUS)	Руководство по установке и эксплуатации.....	47



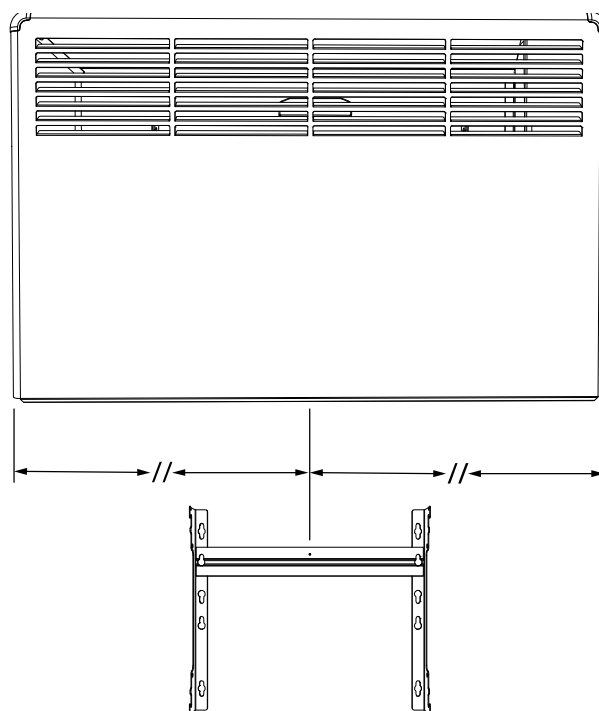
IP21 / IP24



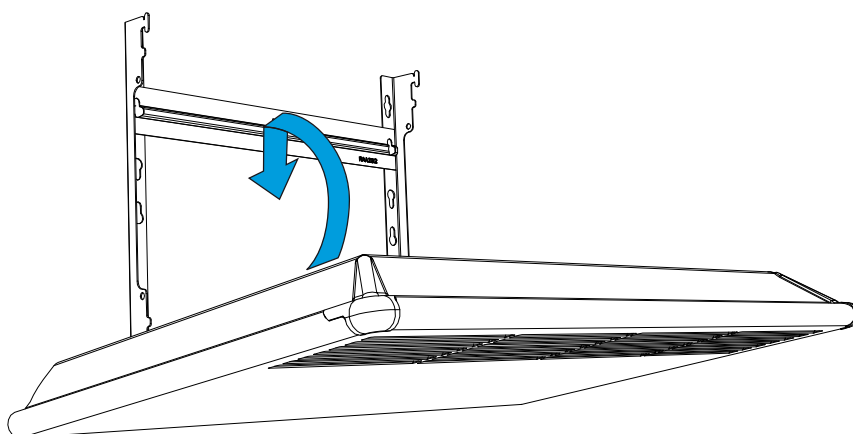
1.1



1.2

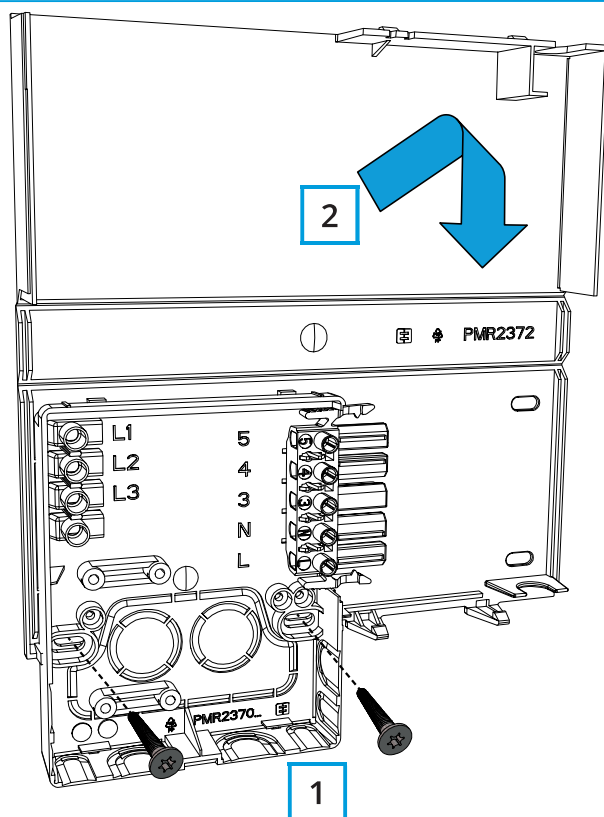


1.3

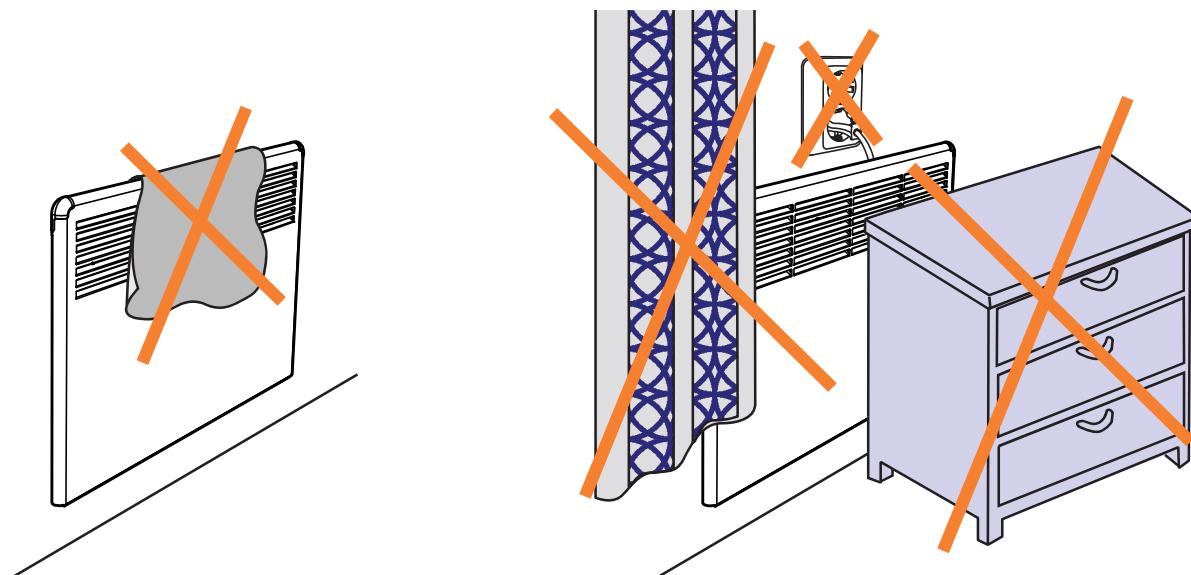
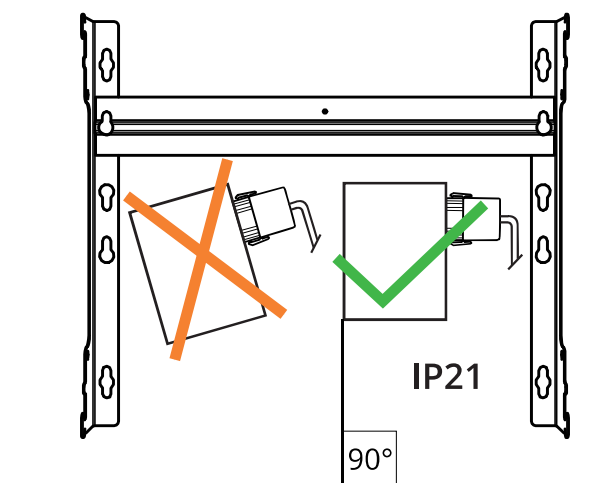


1.4

IP24

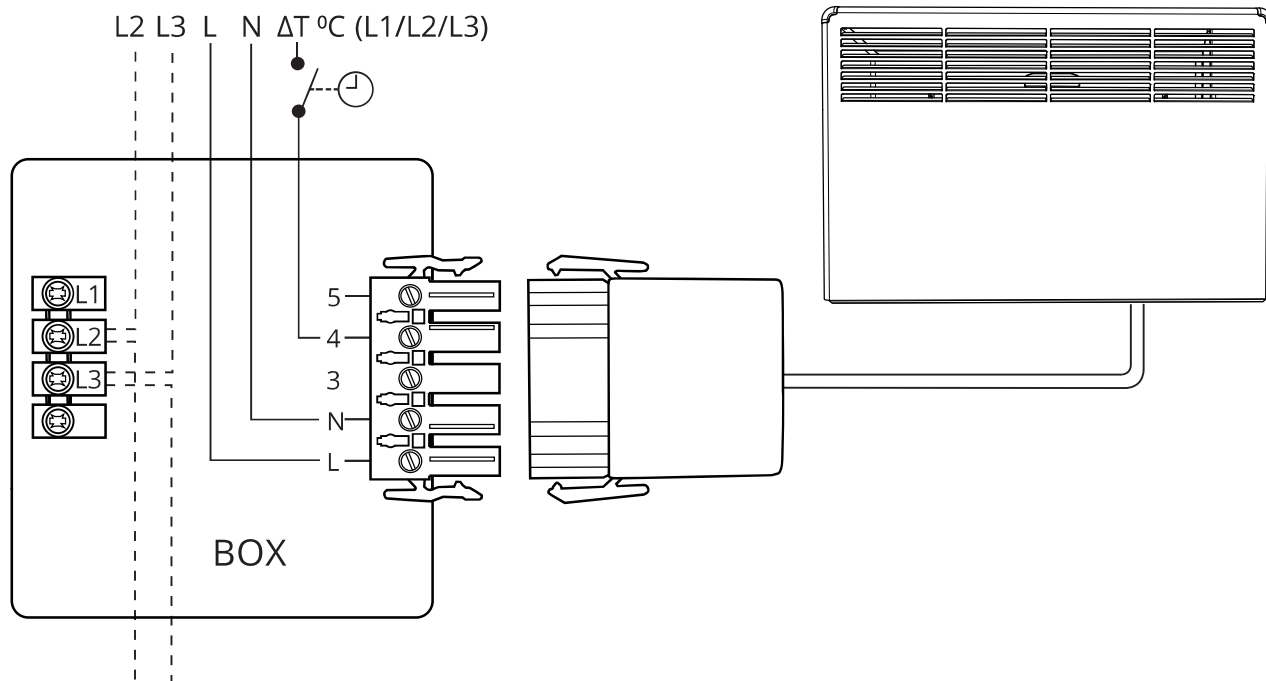


1.5



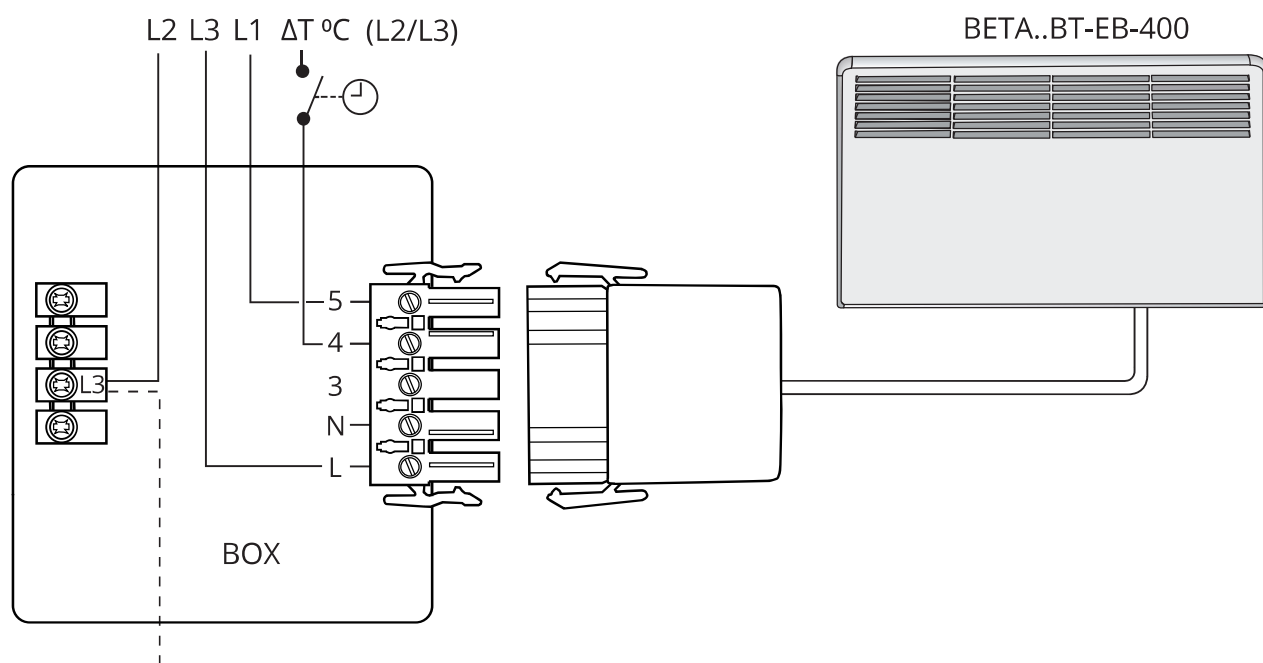
2.a

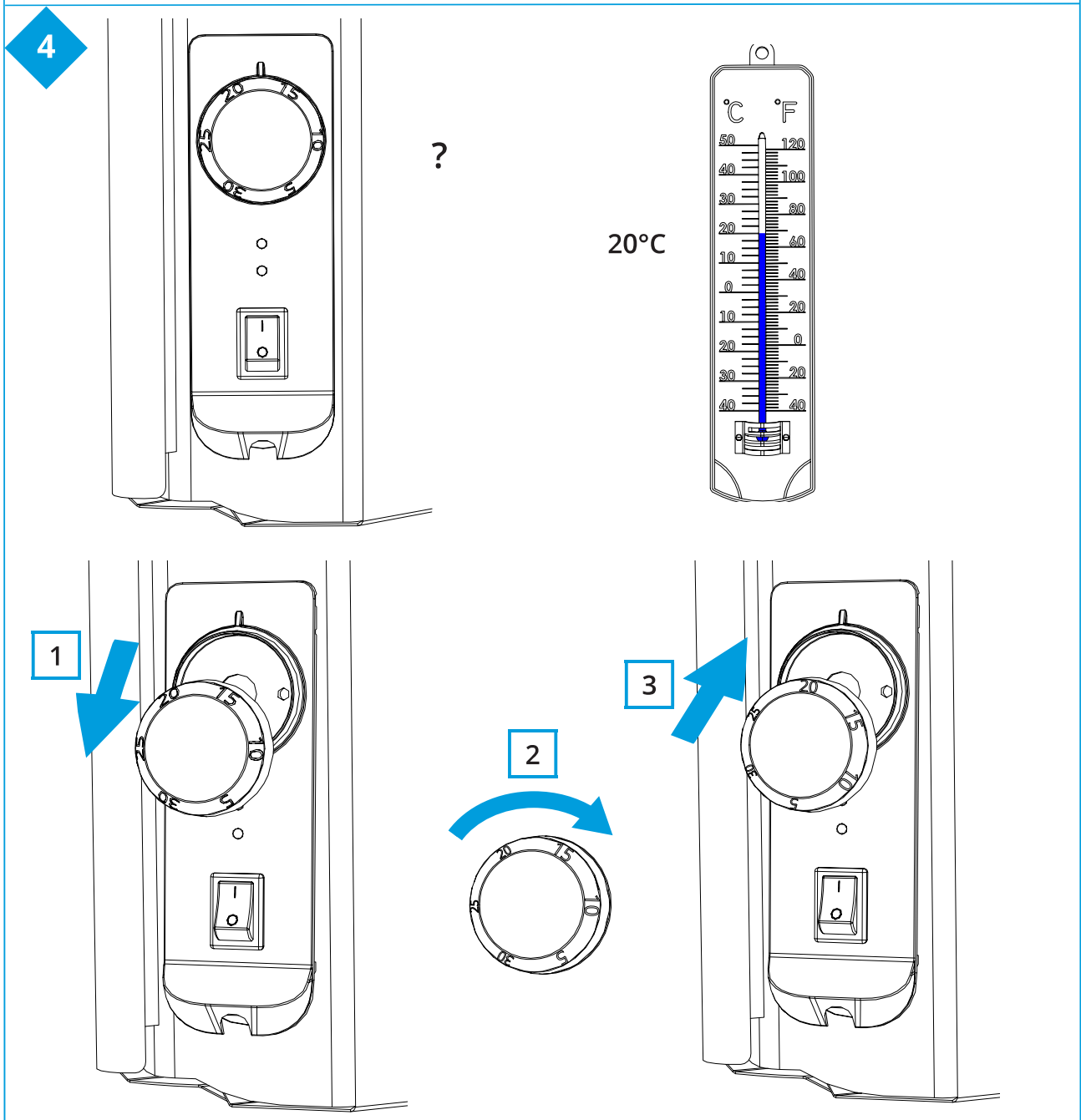
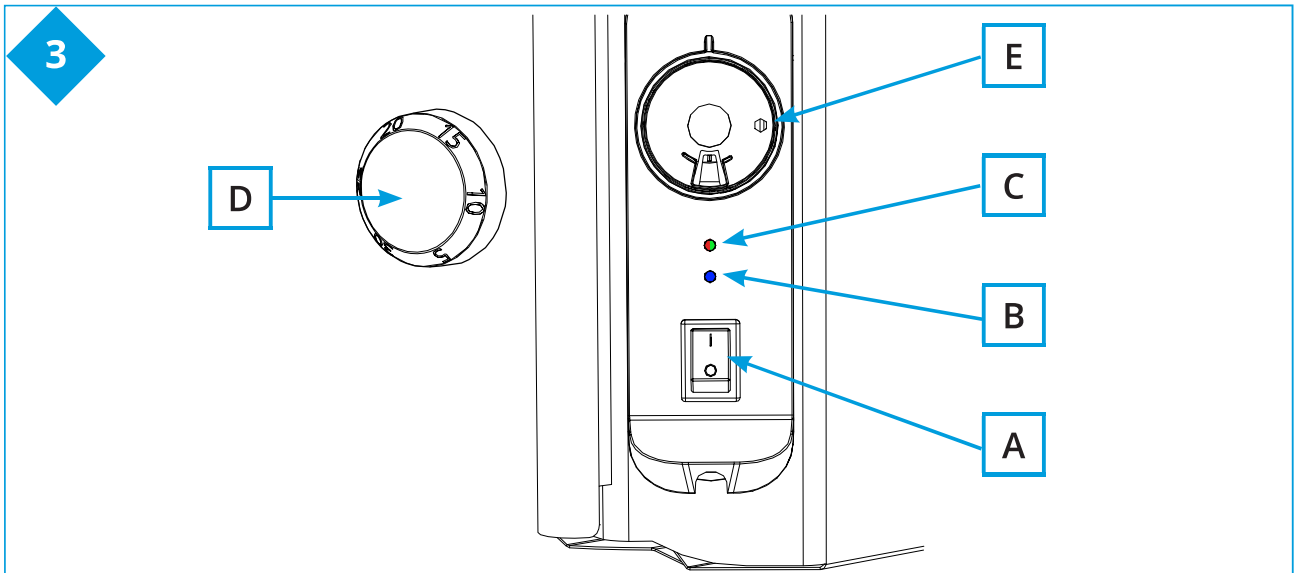
$U(V) = 230V + 10\%, -15\%, 50 \text{ Hz}$



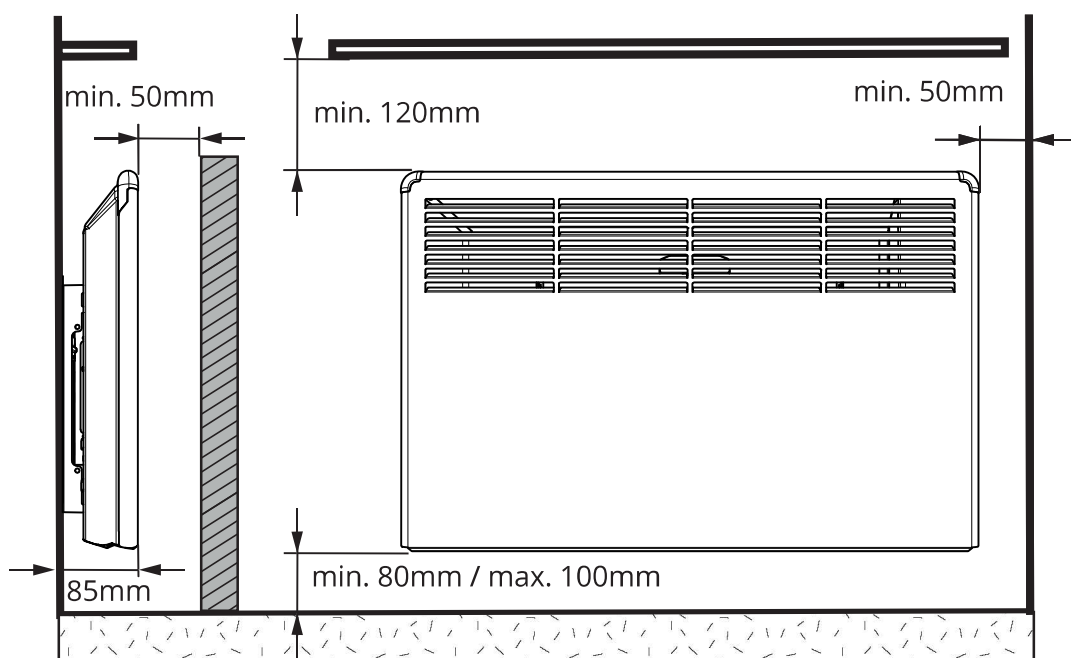
2.b

$U(V) = 400V + 5\%, -10\%, 50\text{Hz}$

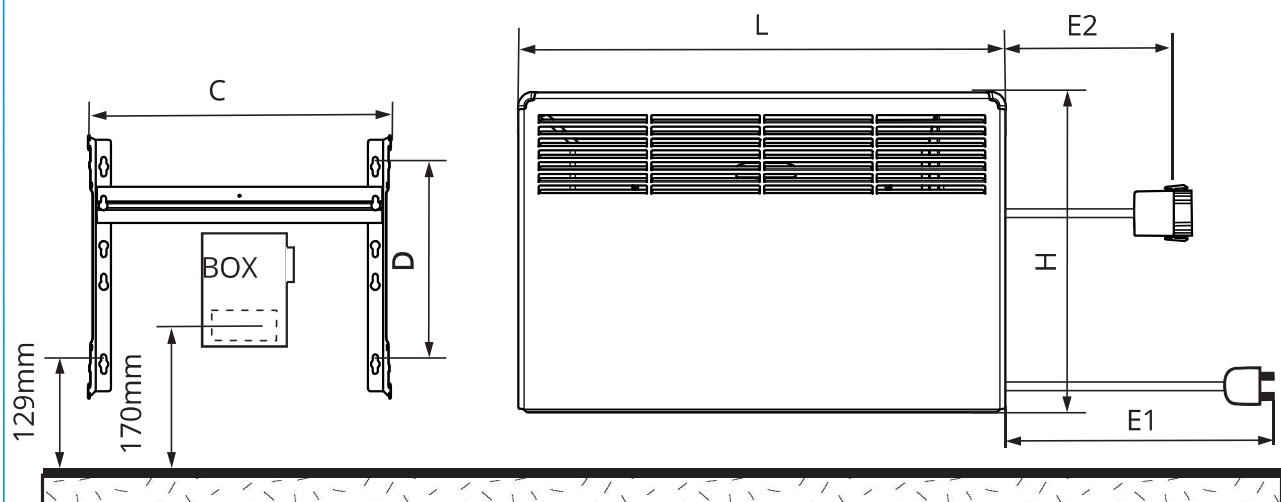




5.1



5.2



TYPE	*P/W	U/V	IP	H/mm	L/mm	D/mm	C/mm	E1/mm	E2/mm
BETA2-BT-EB	250	230	21	389	451	218	300		500
BETA5-BT-EB	500	230	21	389	585	218	300		500
BETA7-BT-EB	750	230	21	389	719	218	440		500
BETA10-BT-EB	1000	230	21	389	853	218	440		500
BETA15-BT-EB	1500	230	21	389	1121	218	700		700
BETA20-BT-EB	2000	230	21	389	1523	218	1000		700
BETA2-BT-EB-400	250	400	21	389	451	218	300		500
BETA5-BT-EB-400	500	400	21	389	585	218	300		500
BETA7-BT-EB-400	750	400	21	389	719	218	440		500
BETA10-BT-EB-400	1000	400	21	389	853	218	440		500
BETA15-BT-EB-400	1500	400	21	389	1121	218	700		700
BETA20-BT-EB-400	2000	400	21	389	1523	218	1000		700
BETA2-BT-EP	250	230	21	389	451	218	300	950	
BETA5-BT-EP	500	230	21	389	585	218	300	950	
BETA7-BT-EP	750	230	21	389	719	218	440	950	
BETA10-BT-EP	1000	230	21	389	853	218	440	950	
BETA15-BT-EP	1500	230	21	389	1121	218	700	1750	
BETA20-BT-EP	2000	230	21	389	1523	218	1000	1750	
BETA2-BT-EB-IP24	250	230	24	389	451	218	300		500
BETA5-BT-EB-IP24	500	230	24	389	585	218	300		500
BETA7-BT-EB-IP24	750	230	24	389	719	218	440		500
BETA10-BT-EB-IP24	1000	230	24	389	853	218	440		500
BETA15-BT-EB-IP24	1500	230	24	389	1121	218	700		700
BETA20-BT-EB-IP24	2000	230	24	389	1523	218	1000		700
BETA2-BT-EB-IP24-400	250	230	24	389	451	218	300		500
BETA5-BT-EB-IP24-400	500	230	24	389	585	218	300		500
BETA7-BT-EB-IP24-400	750	230	24	389	719	218	440		500
BETA10-BT-EB-IP24-400	1000	230	24	389	853	218	440		500
BETA15-BT-EB-IP24-400	1500	230	24	389	1121	218	700		700
BETA20-BT-EB-IP24-400	2000	230	24	389	1523	218	1000		700

*P ≈ +5%, -10%

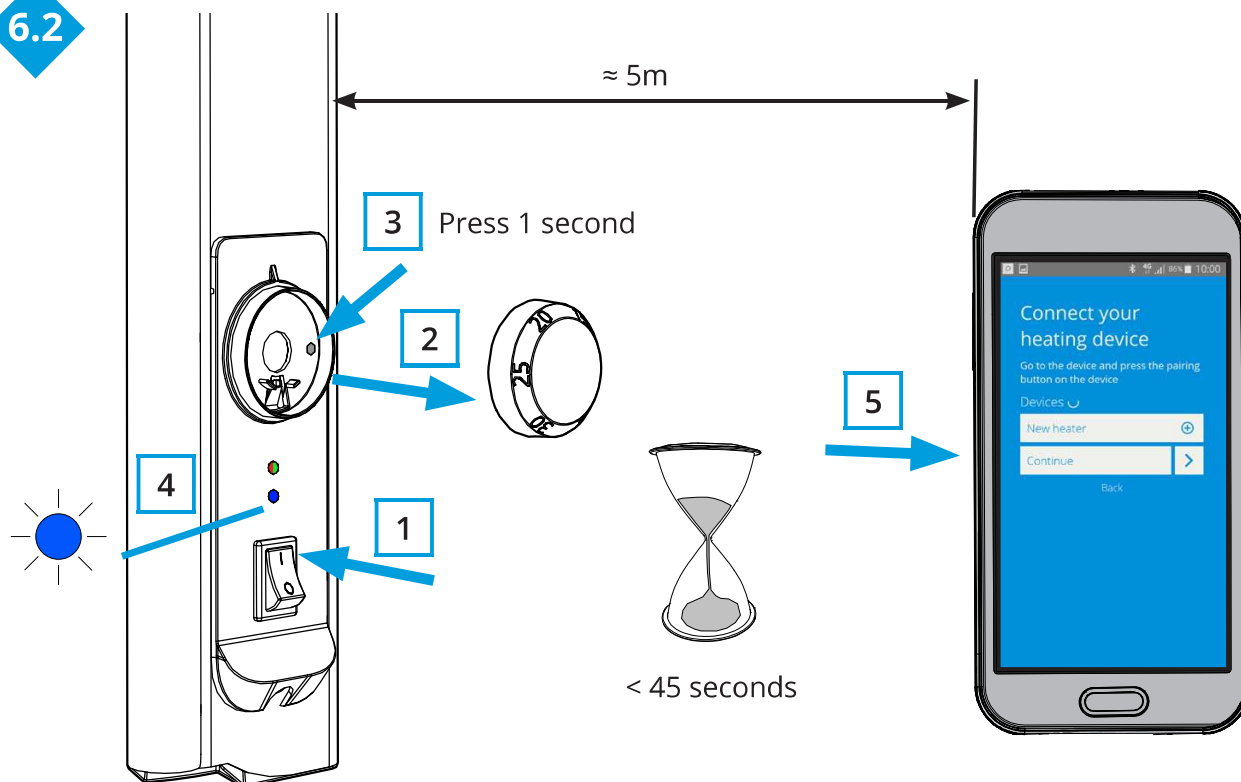
6.1



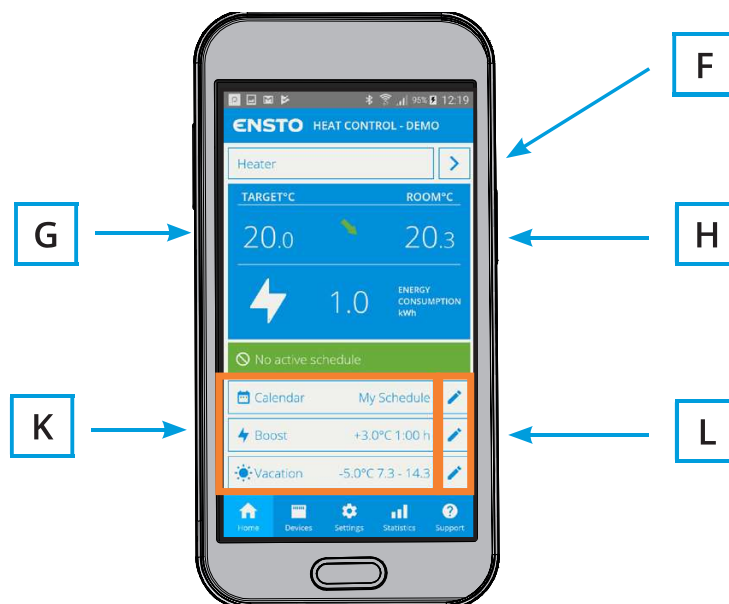
Ensto Heat Control

Android version 4.3 and above
iOS version 8.0 and above

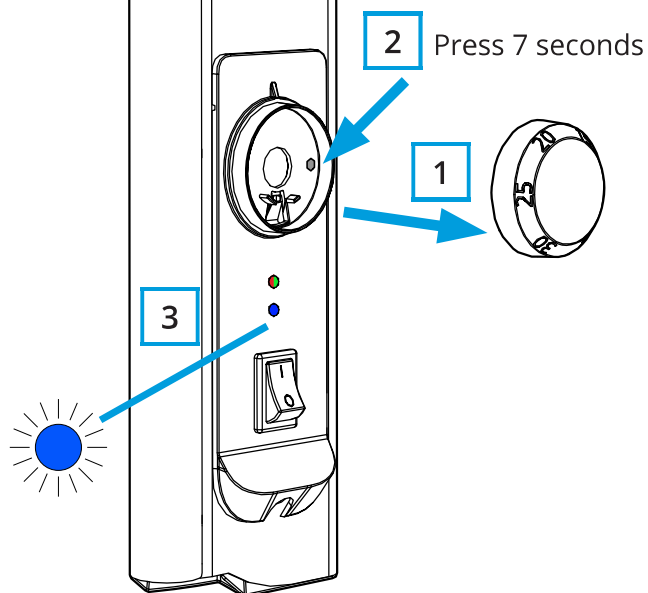
6.2



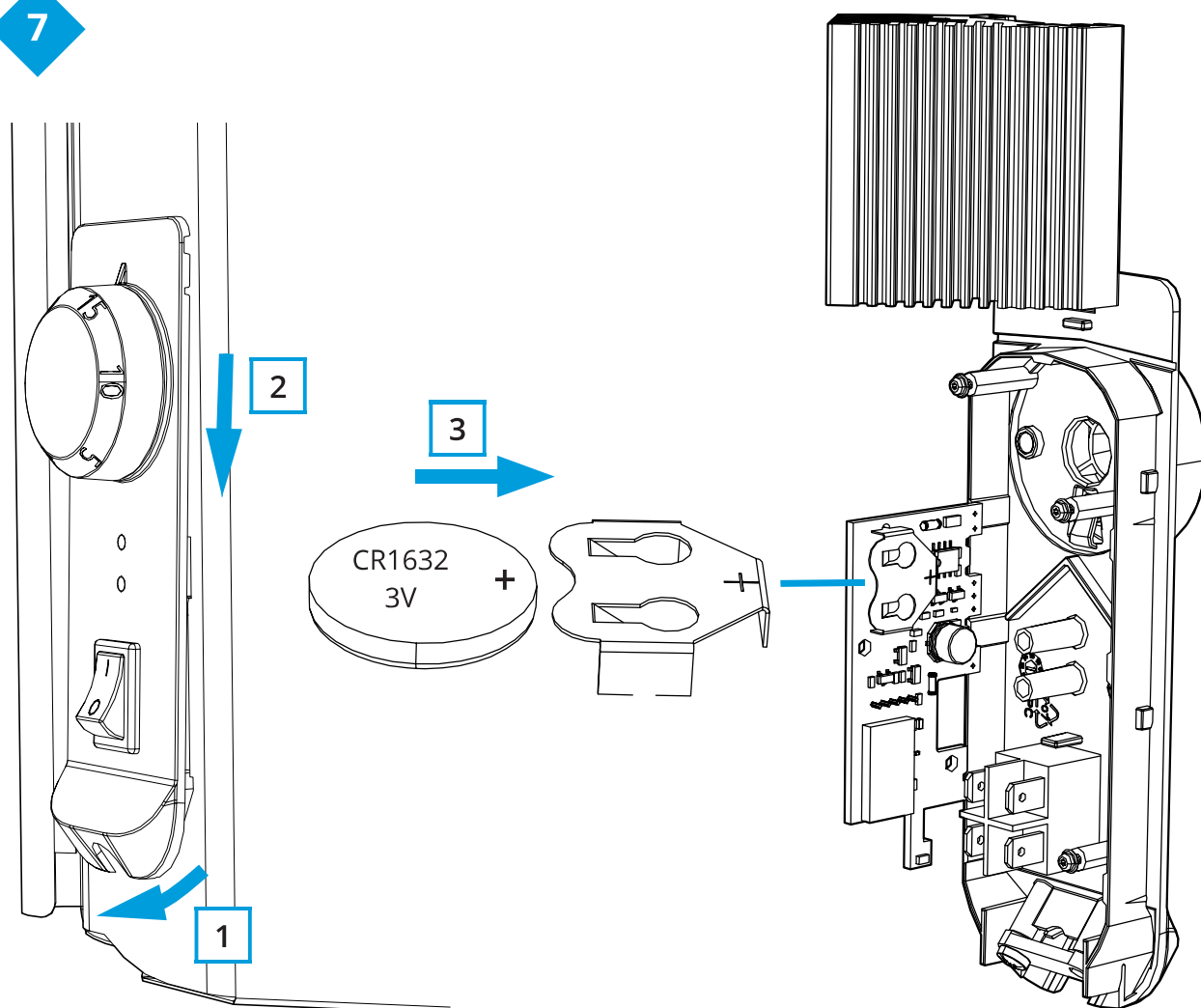
6.3



6.4



7



Installation and Operation Instructions



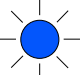


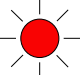
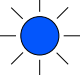
Safety Instructions

- The heaters may only be installed by electrically skilled person.
- The power supply must be disconnected before carrying out any installation or maintenance work on this heater.
- The instruction manual must be stored in a safe location and be available for future installation and service.
- People who are not able to operate according to the manual must not use this appliance.
- CAUTION – Some parts of this heater can become very hot and cause burns. Particular attention has to be where children and vulnerable people are present.
- Children of less than 3 years should be kept away unless continuously supervised.
- Children aged from 3 years and less than 8 years shall only switch on / off the heater provided that it has been placed or installed in its intended normal operating position and they have been given supervision or instruction concerning the use of the heater in a safe way and understand the hazards involved. They shall not plug in, regulate and clean the heater or perform user maintenance.
- If the supply cord is damaged, it must be replaced by the manufacturer or electrically skilled person.

Product Information

- The heaters are intended for permanent installation on the wall rack included in the package, figures 1.1 - 1.4.
- Connect the heater according to the wiring diagram, figures 2a and 2b.
- External voltage has to be connected to terminal 4, if you want to be able to use external temperature change.
- The heaters are double-insulated, class II. Separate earth is not required.
- The dripping water protected BETA IP21 heater must not be installed in places in which it can be subjected to spraying water.
- The splashproof BETA IP24 heater must not be installed in places in which it can be subjected to water jets.
- When the BETA heater is installed in a bathroom, the switch and other controls must not be within the bather's reach.
- The heaters are equipped with an electronic thermostat.
- The auxiliary energy consumption is less than 0,5W.
- Radio frequency range is 2,4 ... 2,483 GHz.
- Radio maximum power is +3 dBm.

LED indicators

LED indicator C		Green: thermostat is on, heating is off
		Red: heating is on
LED indicator B		Blue blinking: pairing is ongoing
		Blue blinking quickly: factory defaults are resetting
		Blue: temperature change
LED indicators C and B	 	Red and blue blinking alternately: faulty sensor

Control Panel, figure 3

A	Power switch
B	Blue LED indicator
C	Red / Green LED indicator
D	Adjustment knob
E	Pairing the heater with mobile device / Factory reset

Commissioning the Heater

- Use the power switch (A) to switch the heater on (position **I**) and off (position **0**).
- Adjust the desired temperature with the adjustment knob (D).

Calibrating the Adjustment Knob, figure 4

- Check the temperature after approximately 24 hours. If the temperature does not match the set value, calibrate the adjustment knob on the thermostat.
- Remove the adjustment knob.
- Put the knob on the toothing in such a manner, that the knob indicates the actual temperature.
- Set the desired temperature with the adjustment knob.


User Instructions for Ensto Heat Control Application

With this application you can program and change the settings of your heater. Bluetooth technology is used for the wireless connection. You can connect to one device at a time. The range in free space is approximately 5m.

Commissioning

- Download the Ensto Heat Control application from Apple Store or Google Play, figure 6.1.
- Open the application. In **"DEMO"** mode you can practice using the application. The Tutorial video shows application's features and guides you through the commissioning. At any time, you can go back to the Tutorial through the **"Support"** menu.
- After the Tutorial, pair your mobile device with your heater, figure 6.2.
 - » Switch on the heater with the power switch (A).
 - » Remove the adjustment knob (D).
 - » Press the Bluetooth button (E) on the heater for 1 second.
 - » The blue LED indicator (B) blinks.
 - » When the application has found your heater, you can see the default name **"New heater"** on your mobile display.
 - » Press the **"New heater"** button within 45 seconds.
 - » The blue LED indicator (B) turns off, when the pairing is completed or 45 seconds is exceeded.
 - » Put the adjustment knob (D) in place.
- Now you can find your heater in **"Devices / My devices"**.

Temperature Change with Calendar, Boost and Vacation

- With this application you can change the setting temperature adjusted with the adjustment knob (D) on the heater.
- The change may be either a rise or a drop in temperature.
- The blue LED indicator (B) is on when the temperature change is in use.
- Press the  button on home display to enter the editing mode.
- **"Calendar"** is intended for weekly reoccurring events. For example, on weekdays you can drop the temperature overnight, as well as when you are away from the building. Note! When making settings for overnight, the night must be in two sections.
- **"Boost"** is intended for a temporary temperature change. For example, after a shower you can raise the temperature in the bathroom, so that the floor will dry faster.
- **"Vacation"** is intended for long-term changes in temperature, e.g for a weekend break or an annual holiday.

- The **“Calendar”**, **“Boost”** and **“Vacation”** buttons are on / off buttons. When the temperature change is activated, the **“Calendar”** and **“Vacation”** buttons are green, the **“Boost”** button is orange.
- When the function **“Adaptive temperature change”** is active, the thermostat will advance the heating, so that the desired temperature has been reached at the scheduled time. By default, the function is on.

External Temperature Change

- You can use external temperature change, if external voltage has been connected to the heater.
- Disable / Enable the function from **“Settings / External control”**.
- From **“Temperature”** you can set desired absolute temperature value. **“Temperature change”** can be either a rise or a drop in the set point temperature. The default for external control is absolute temperature 10 °C.
- The blue LED indicator (B) is on when the temperature change is in use.
- If the **“External Control / Temperature”** is enabled you cannot use the adjustment knob for setting temperature.

Home Screen, figure 6.3

F	Active device
G	Set point temperature
H	Actual temperature
K	On / Off button
L	Enter editing mode

Resetting the Factory Settings, figure 6.4

- Remove the adjustment knob (D).
- Press the Bluetooth button (E) on the heater.
- After 7 seconds, the blue LED (B) indicator B starts to blink quickly.
- Paired devices, consumption information and calendar settings are removed.

Battery

- The purpose of the battery is to maintain the time during power cuts. If the clock does not keep correct time, the battery must be replaced. The battery change interval is several years and is usage dependent.



*The battery may only be replaced by a skilled or instructed person.
Disconnect the power supply before replacing the battery.*

- Remove the thermostat, figure 7.
- The battery is located on the thermostat circuit card.
- Replace the battery with same type of battery as the original, CR1632.
- Put the thermostat in place.
- Dispose of the empty battery according to local recycling guidelines.

Environmental Aspects



The heater's cardboard packing is suitable for recycling.

When the heater is at the end of the life cycle, it must be disposed of properly according to local recycling guidelines.

Warranty

The warranty period for Ensto Beta heaters is 5 years from the date of purchase but no longer than 6 years from the date of manufacture. The manufacture date is located on the rating label.

Warranty terms, see the product card www.ensto.com.

Declaration of Conformity

Hereby, Ensto Finland Oy declares that the Beta-BT heaters are in compliance with Directive 2014/53/EU. The full text of the EU declaration of conformity is available at the following internet address: www.ensto.com.