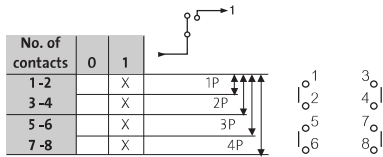


Cam switches

 Characteristics (p. 213)

► ON-OFF SWITCH



MINI CAM SWITCH - 10 A (AC21)

∅ 16 and 22 single hole front mounting

Cat. No.



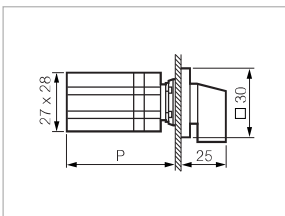
223501

□ 30 aluminium plate and frame

- 1P - 1 contact
- 2P - 2 contacts
- 3P - 3 contacts
- 4P - 4 contacts



- 223501**
- 223502**
- 223503**
- 223504**



Dimensions in mm
*P: 50 (1-2 CONTACTS)
62 (3-4 CONTACTS)

PR 12 - 16 A (AC21)

2-screw panel mount – interval: 30 mm

Cat. No.



NB02AQ1

Grey/black small handle
□ 48 aluminium plate and frame

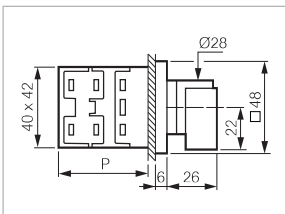
- 1P - 1 contact
- 2P - 2 contacts
- 3P - 3 contacts
- 4P - 4 contacts



Designation

- PR12 1101 A4 E Q48PN
- PR12 1102 A4 E Q48PN
- PR12 1103 A4 E Q48PN
- PR12 1104 A4 E Q48PN

- NB01AQ1**
- NB02AQ1**
- NB03AQ1**
- NB04AQ1**



Dimensions in mm
*P: 36 (1-2 CONTACTS)
46 (3-4 CONTACTS)

- 1P - 1 contact
- 2P - 2 contacts
- 3P - 3 contacts



- PR12 1101 A8 E Q48PN
- PR12 1102 A8 E Q48PN
- PR12 1103 A8 E Q48PN

- NB01EQ1**
- NB02EQ1**
- NB03EQ1**

*P = Depth

Catalogue No. in bold: normally in stock at distribution outlets