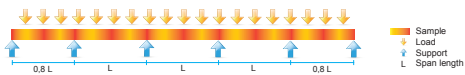
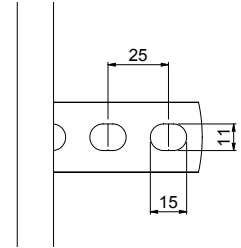
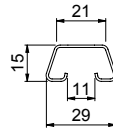
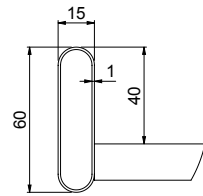
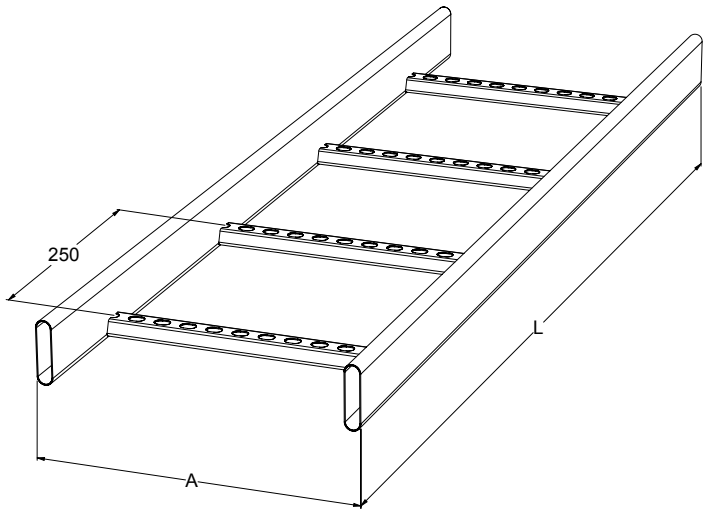
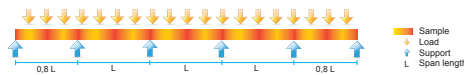
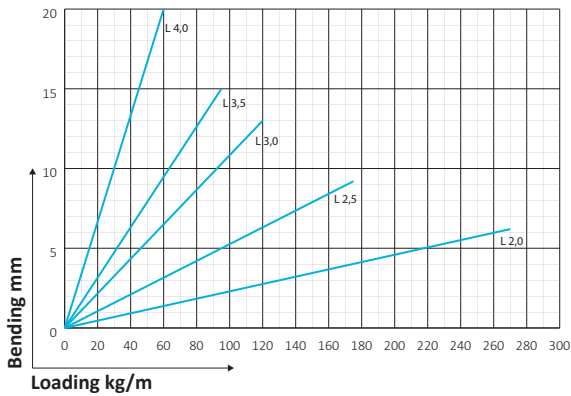


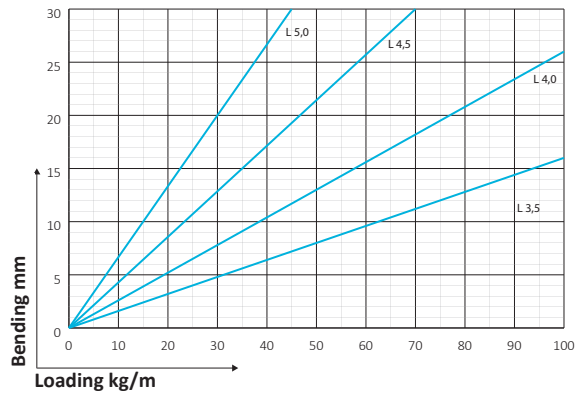
CABLE LADDER KS80



KS80



KS80 SP 2.0



Code	Product	Weight kg / pcs	Code	Product	Weight kg / pcs	A mm
Hot-dip galvanized after manufacturing, coating thickness 55 μm .			Hot-dip galvanized after manufacturing, coating thickness 55 μm . Side tube material thickness 2mm.			
Corrosivity category C1 - C4			Corrosivity category C1 - C4			
1449521	KS80-150 L=6000 HDG	15,10				150
1449522	KS80-200 L=6000 HDG	16,80	1449507	KS80-200 SP2.0 L=6000 HDG	26,67	200
1449523	KS80-300 L=6000 HDG	17,28	1449508	KS80-300 SP2.0 L=6000 HDG	27,81	300
1449524	KS80-400 L=6000 HDG	18,78	1449509	KS80-400 SP2.0 L=6000 HDG	28,96	400
1449525	KS80-500 L=6000 HDG	19,90	1449510	KS80-500 SP2.0 L=6000 HDG	31,10	500
1449526	KS80-600 L=6000 HDG	21,14	1449511	KS80-600 SP2.0 L=6000 HDG	31,26	600
1449527	KS80-700 L=6000 HDG	20,34				700
1449528	KS80-800 L=6000 HDG	21,49				800
1449529	KS80-900 L=6000 HDG	22,64				900
1449530	KS80-1000 L=6000 HDG	28,35				1000
1449406	KS80-150 L=3000 HDG	7,02				150
1449407	KS80-200 L=3000 HDG	8,18				200
1449408	KS80-300 L=3000 HDG	8,64				300
1449409	KS80-400 L=3000 HDG	9,58				400
1449410	KS80-500 L=3000 HDG	9,75				500
1449411	KS80-600 L=3000 HDG	10,60				600

Product sold in packs of 10.