



**GWY-01**  
INSTALLATION MANUAL

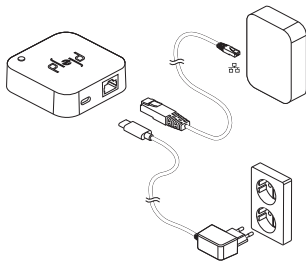


**GATEWAY**

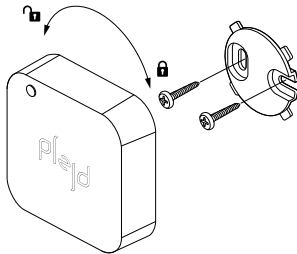
Further information can be found  
in the Plejd app or at [plejd.com](https://plejd.com)

## 1 Connect the product

The Gateway connects to your local network via Ethernet and communicates wirelessly with your Plejd products. Place the Gateway within clear range of your Plejd system, not in a closed metal cabinet.



The Gateway can also be mounted in place with the accompanying wall bracket. A network cable and a power adapter are supplied in the box. Screws for the wall bracket are not included.



## 2 Download the app and follow the instructions

Download the Plejd app on the App Store or Google Play. Open the app and follow the instructions to add the Gateway to your Plejd system.

Setup requires an Internet connection on your phone. With the mobile app you can communicate directly to the unit via Internet and Bluetooth.

**Power adapter (supplied)**

100-230 V ~50/60 Hz 0.2 A

Output voltage: +5V DC 1 A

USB-C

**Power consumption**

0.6 W

**External operating temperature**

0 to +35 °C

**Dimensions**

70x70x20 mm

**LAN connection**

Ethernet/RJ45

**Radio**

2.4 GHz mesh

Bluetooth®

**Radio range\***

Up to 10m indoors.

\*The Plejd mesh technology extends the range by allowing the units to communicate with each other.

**Support**

In the event of any technical questions, please contact Plejd customer services.

E-mail: [support@plejd.com](mailto:support@plejd.com) | Phone: +46 (0)10 203 89 91

## Compliant to standards

Plejd AB hereby declares that the product complies with the norms and guidelines pursuant to Directive 2014/53/EU.

EN 60950-1

EN 301489-17

EN 300328



## Plejd AB

Krokslätts fabriker 27A

431 37 Mölndal

Sweden

Manufacturer | Plejd AB

Country of manufacture | Sweden