

DATA SHEET

Art.nr.:
Q9MSY

ONEPOLE PRO Lighting Kit Duo - With LED 2x6W 3000K

Q9MSY

HS-Code: 94054090

Net Weight

0,22kg

Gross Weight

0,45kg

Net Dimension

315,25x128x24mm

Gross Dimensions

318x138x30mm

Material

Powder-coated searesistant aluminum

Surface Treatment

Powdercoated ISO 12944, Category C4

Protection Class

Class I, must be connected to PE

Color Temperature

3000K

Lumen

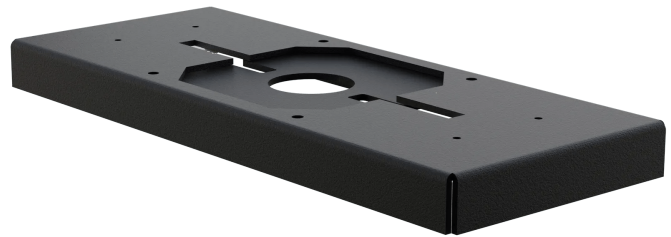
1058

Power

12

Accessories

LED 2x6W 3000K (Q9T85)



ONEPOLE

COMPLETE
EV INFRASTRUCTURE

Data sheet | 2025 | www.onepole.no

PRODUCED AND DESIGNED IN NORWAY 